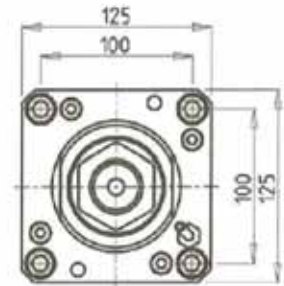
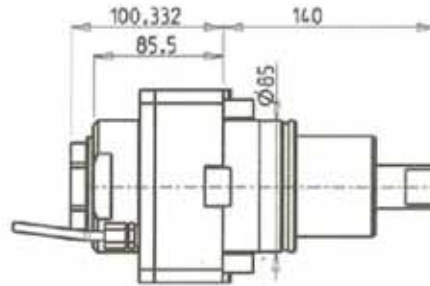
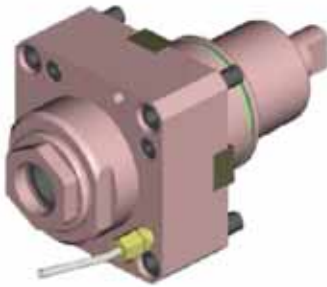


BMT85

DRIVEN

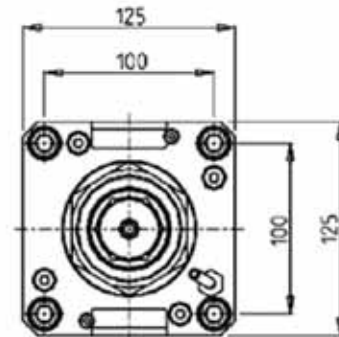
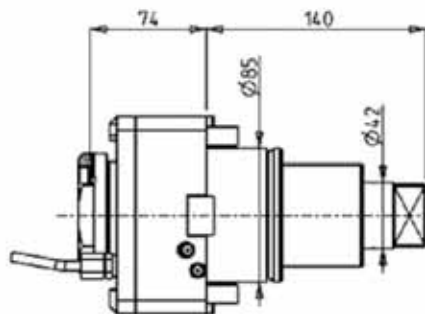
RADIAL DRIVEN TOOL



Part Number	Description	Spindle	I	RPM	Cool Thru	Ext. Cool
DWO 1240150	Radial ERA50 BMT85	ERA50	1:1	3000		X
DWO 0160250	Radial ERA50 BMT85 Cool Thru*	ERA50	1:1	3000	X	X

* Coolant Thru tools are designed for 1000 psi.
They require 5 Micron Filtration and **CANNOT** be run dry.

RADIAL MTSK-63 DRIVEN TOOL



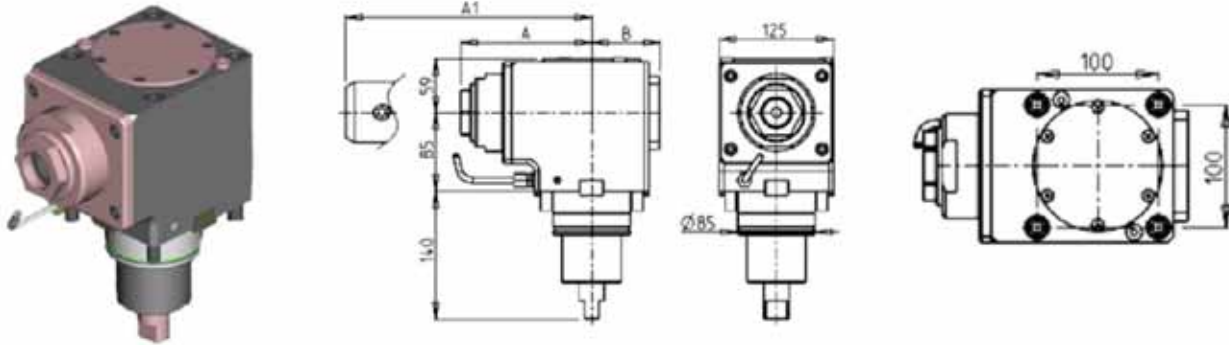
Part Number	Description	Spindle	I	RPM	Cool Thru	Ext Cool
DWO 1750163	Radial MTSK-63	MTSK-63	1:1	3000		X
DWO 1750263	Radial MTSK-63 Cool Thru*	MTSK-63	1:1	3000	X	X

* Coolant Thru tools are designed for 1000 psi.
They require 5 Micron Filtration and **CANNOT** be run dry.

BMT85

DRIVEN

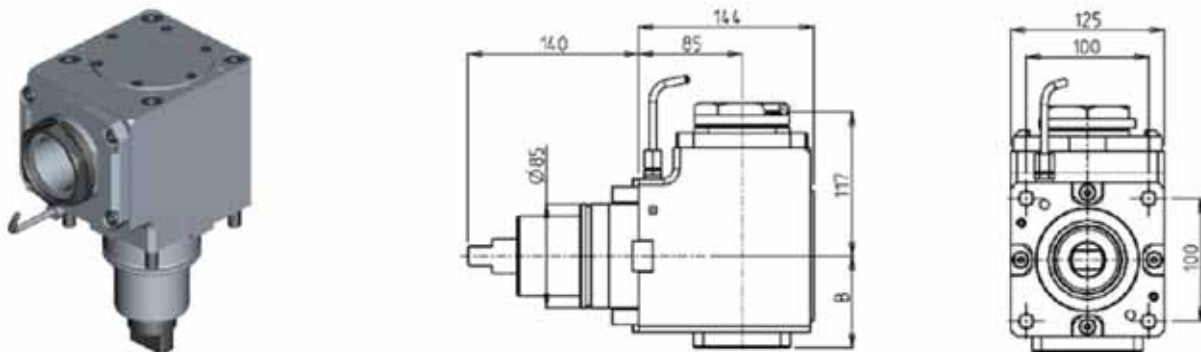
AXIAL DRIVEN TOOL H=85mm



Part Number	Description	Reversible	Spindle	I	RPM	Cool Thru	Ext. Cool	A	A1	B
DWO 0150150	Axial ERA50 H=85mm	X	ERA50	1:1	3000		X	143.33		75
DWO 0151250	Axial ERA50 H=85mm Cool Thru*	X	ERA50	1:1	3000	X	X	143.33		86
DWO 0150240	Axial Weldon 40 H=85mm	X	Weldon 40	1:1	3000		X		175.5	75
DWO 0150140	Axial Weldon 40 H=85mm Cool Thru*	X	Weldon 40	1:1	3000	X	X		175.5	86

* Coolant Thru tools are designed for 1000 psi.
They require 5 Micron Filtration and **CANNOT** be run dry.

AXIAL MTSK DRIVEN TOOL H=85mm



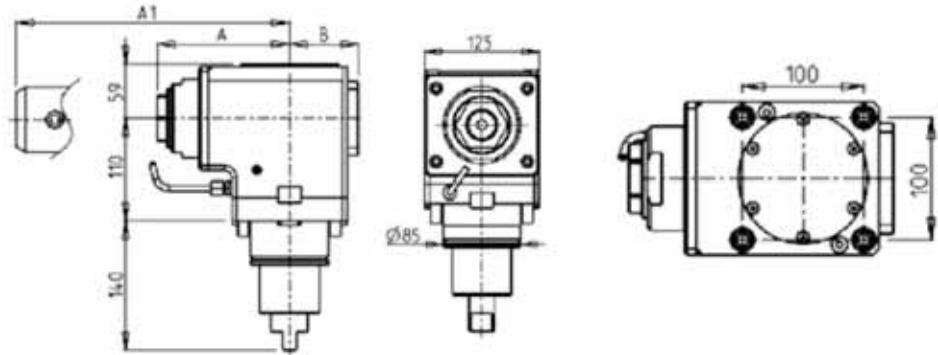
Part Number	Description	Spindle	I	RPM	Reversible	Cool Thru	Ext Cool	B
DWO 1590163	Axial MTSK 63 H=85mm	MTSK63	1:1	3000	X		X	75
DWO 1590263	Axial MTSK 63 H=85mm Cool Thru*	MTSK63	1:1	3000	X	X	X	86

* Coolant Thru tools are designed for 1000 psi.
They require 5 Micron Filtration and **CANNOT** be run dry.

BMT85

DRIVEN

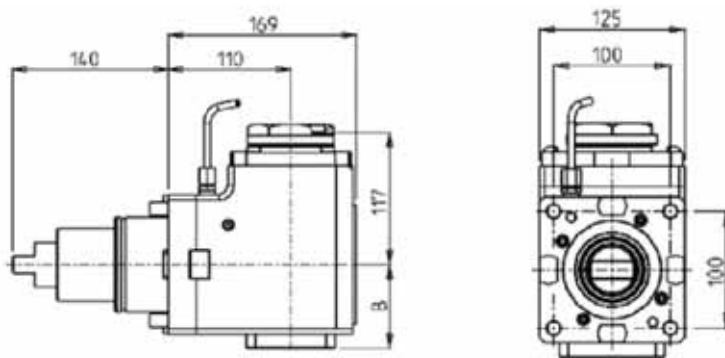
AXIAL DRIVEN TOOL H=110mm



Part Number	Description	Reversible	Spindle	I	RPM	Cool Thru	Ext. Cool	A	A1	B
DWO 1290150	Axial ERA50 H=110mm	X	ERA50	1:1	3000		X	143.33		75
DWO 1291250	Axial ERA50 H=110mm Cool Thru*	X	ERA50	1:1	3000	X	X	143.33		86
DWO 1290240	Axial Weldon 40 H=110mm	X	Weldon 40	1:1	3000		X		175.5	75
DWO 1290140	Axial Weldon 40 H=110mm Cool Thru*	X	Weldon 40	1:1	3000	X	X		175.5	86

* Coolant Thru tools are designed for 1000 psi.
They require 5 Micron Filtration and **CANNOT** be run dry.

AXIAL MTSK DRIVEN TOOL H=110mm



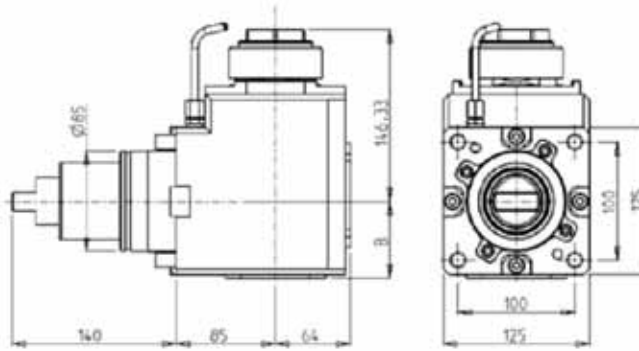
Part Number	Description	Spindle	I	RPM	Reversible	Cool Thru	Ext Cool	B
DWO 1600163	Axial MTSK63 H=110mm	MTSK63	1:1	3000	X		X	75
DWO 1600263	Axial MTSK63 H=110mm Cool Thru*	MTSK63	1:1	3000	X	X	X	86

* Coolant Thru tools are designed for 1000 psi.
They require 5 Micron Filtration and **CANNOT** be run dry.

BMT85

DRIVEN

AXIAL GEARED-DOWN 2:1 DRIVEN TOOL

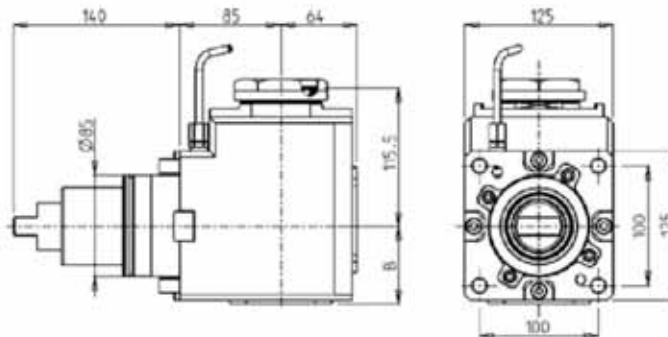


Part Number	Description	Reversible	Spindle	I	RPM	Cool Thru	Ext. Cool	B
DWO 0460150	Axial Geared-Down ERA50	X	ERA50	2:1	1500		X	65.5
DWO 0460250	Axial Geared-Down ERA50 Cool Thru*	X	ERA50	2:1	1500	X	X	82

* Coolant Thru tools are designed for 1000 psi.
They require 5 Micron Filtration and **CANNOT** be run dry.

AXIAL MTSK GEARED-DOWN 2:1 DRIVEN TOOL H=85mm

See Accessories for MTSK Quick Change Tool Holder Clamps



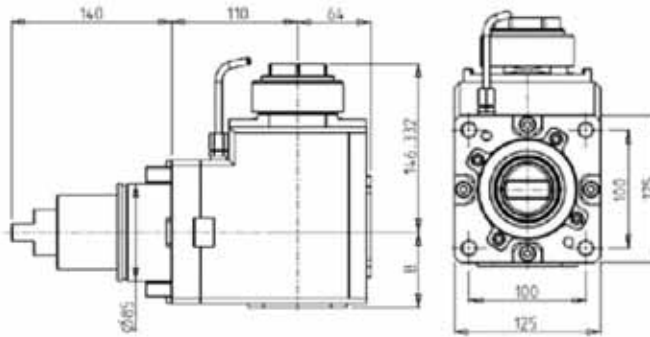
Part Number	Description	Reversible	Spindle	I	RPM	Cool Thru	Ext. Cool	B
DWO 0760163	Axial MTSK-63 Geared-Down	X	MTSK-63	2:1	1500		X	65.5
DWO 0760263	Axial MTSK-63 Geared-Down Cool Thru*	X	MTSK-63	2:1	1500	X	X	82

* Coolant Thru tools are designed for 1000 psi.
They require 5 Micron Filtration and **CANNOT** be run dry.

BMT85

DRIVEN

AXIAL GEARED-DOWN 2:1 DRIVEN TOOL H=110mm

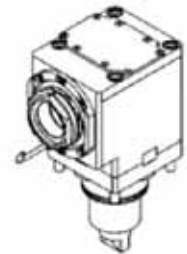
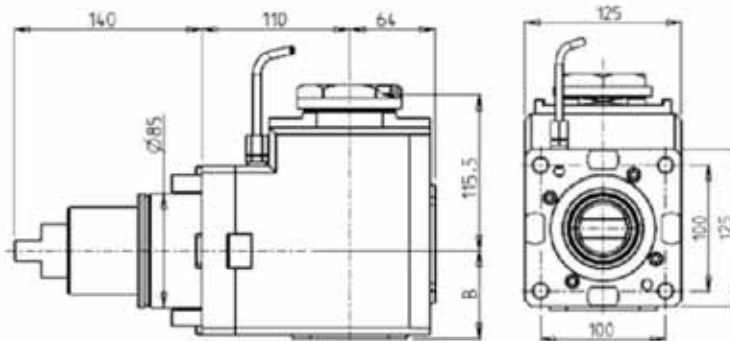


Part Number	Description	Spindle	Reversible	I	RPM	Cool Thru	Ext. Cool	B
DWO 1210150	Axial ERA50 Geared-Down 2:1	ERA50	X	2:1	1500		X	65.5
DWO 1210250	Axial ERA50 Geared-Down 2:1 Cool Thru*	ERA50	X	2:1	1500	X	X	82

* Coolant Thru tools are designed for 1000 psi.
They require 5 Micron Filtration and **CANNOT** be run dry.

AXIAL MTSK GEARED-DOWN 2:1 DRIVEN TOOL H=110mm

See Accessories for MTSK Quick Change Tool Holder Clamps



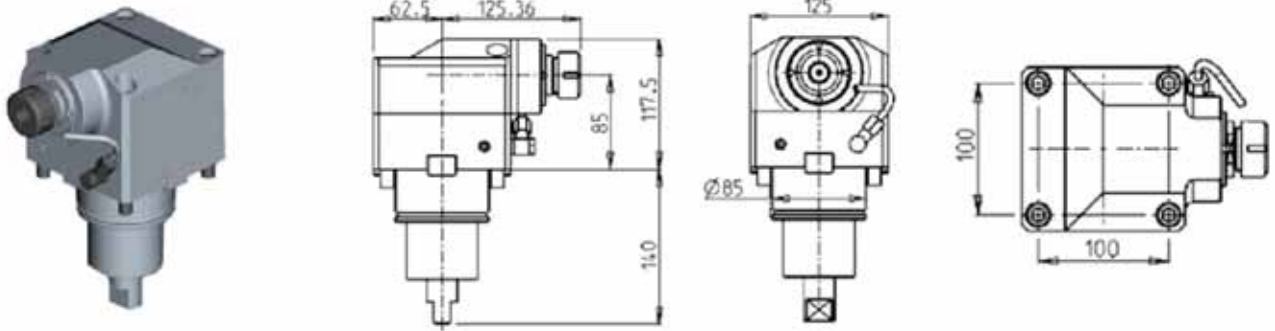
Part Number	Description	Spindle	Reversible	I	RPM	Cool Thru	Ext. Cool	B
DWO 1200163	MTSK-63 Geared-Down 2:1	MTSK-63	X	2:1	1500		X	65.5
DWO 1200263	MTSK-63 Geared-Down 2:1 Cool Thru*	MTSK-63	X	2:1	1500	X	X	82

* Coolant Thru tools are designed for 1000 psi.
They require 5 Micron Filtration and **CANNOT** be run dry.

BMT85

DRIVEN

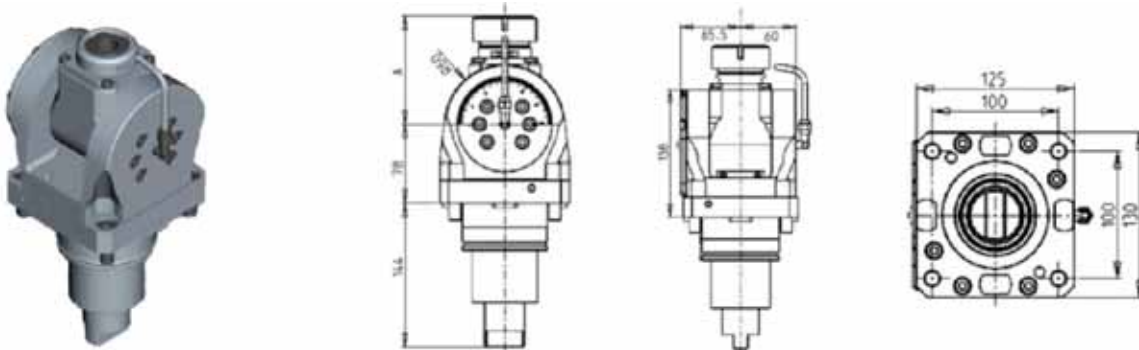
AXIAL GEARED-UP DRIVEN TOOL I=1:3



Part Number	Description	Spindle	I	RPM	Cool Thru	Ext. Cool
DWO 0580125	Axial Geared-Up 1:3 ER25	ER25	1:3	9000		X
DWO 0580225	Axial Geared-Up 1:3 ER25 Cool Thru*	ER25	1:3	9000	X	X

* Coolant Thru tools are designed for 1000 psi.
They require 5 Micron Filtration and **CANNOT** be run dry.

0-180 ADJUSTABLE ANGLE DRIVEN TOOL



Part Number	Description	Spindle	I	RPM	Cool Thru	Ext. Cool	A
DWO 0830332	0-180 Adj. Angle ERA32 BMT85	ERA32	1:1	3000		X	81
DWO 0830432	0-180 Adj. Angle ERA32 BMT85 Cool Thru*	ERA32	1:1	3000	X	X	81
DWO 0830140	0-180 Adj. Angle ER40 BMT85	ER40	1:1	3000		X	108.66
DWO 0830240	0-180 Adj. Angle ER40 BMT85 Cool Thru*	ER40	1:1	3000	X	X	108.66

* Coolant Thru tools are designed for 1000 psi.
They require 5 Micron Filtration and **CANNOT** be run dry.

Note :

Wrenches are provided with the purchase of Specialty Toolholders

