



Made in Italy

The Big Technology for the Big Industry



Military Industries



Cars Industries



Aerospace Industries



Mold & Die Industries



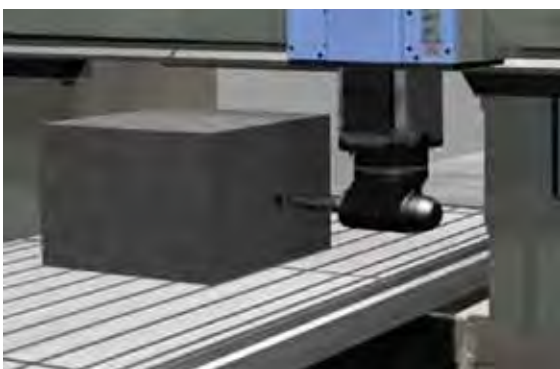
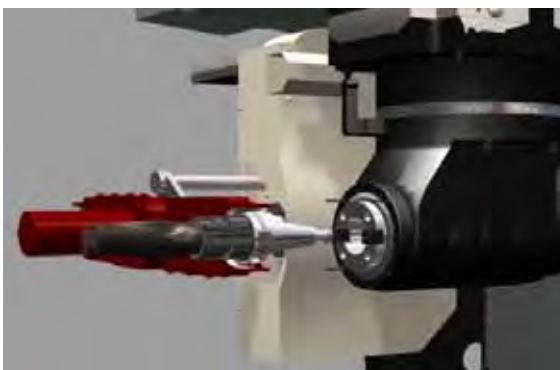
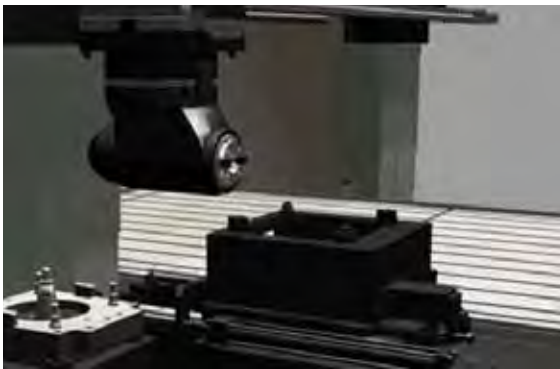
Heavy Industries

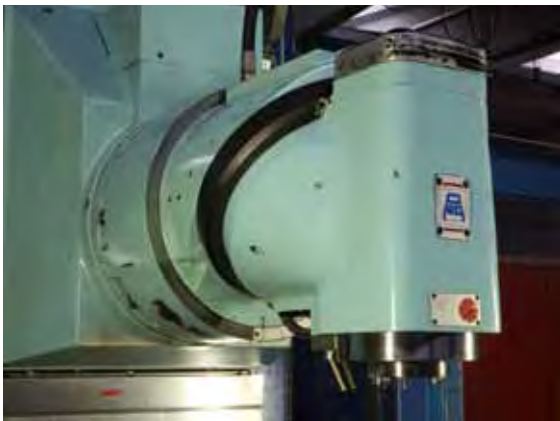


Naval Industries



Energy Industries





O.M.G.

*The **Big**Techno*





*Technology for the **Big**Industry*

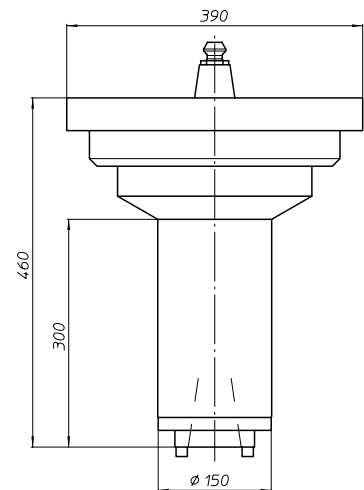


Extension



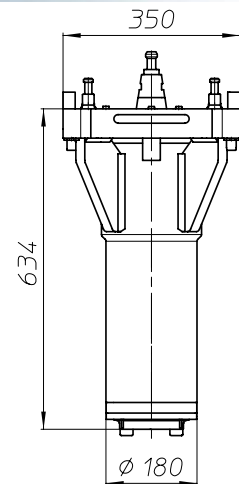
Extension head TFS11807

- Power up to 30 kW
- Same torque of machine spindle
- Ratio I-O: 1-1
- Max RPM 3.000
- Output: BT50, DIN69871-A50, DIN2080-50, DIN69893-HSK100.
- Coolant by nozzle
- Weight kg 150



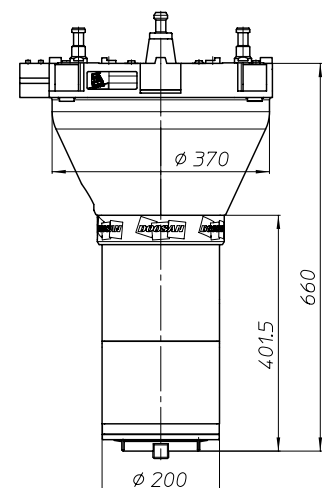
Extension head TFS07308

- Power up to 40 kW
- Same torque of machine spindle
- Ratio I-O: 1-1
- Max RPM 4.000
- ATC output: BT50, DIN69871-A50, DIN2080-50, DIN69893-HSK100, CAPTO C8.
- Coolant through the tool centre and by nozzle
- Weight kg 175



Extension head TFS33708

- Power up to 50 kW
- Same torque of machine spindle
- Ratio I-O: 1-1
- Max RPM 6.000
- ATC output: BT50, DIN69871-A50, DIN69893-HSK100, CAPTO C8. Cooling spindle.
- Coolant through the tool centre and by nozzle
- Weight kg 225

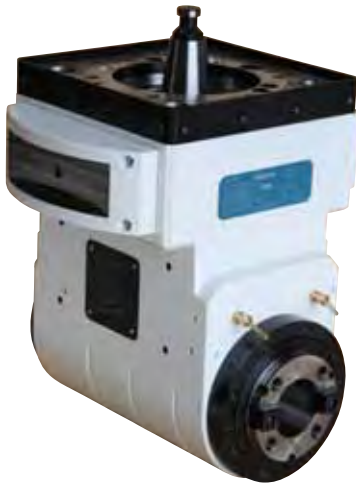
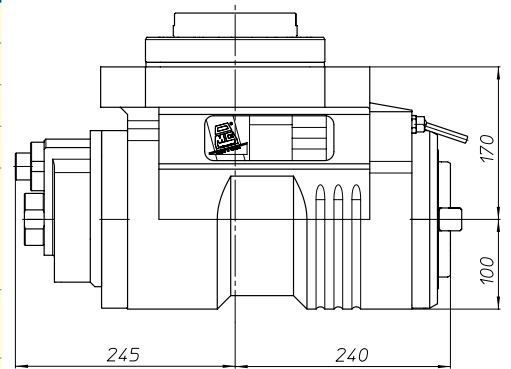


Manual Angle Head



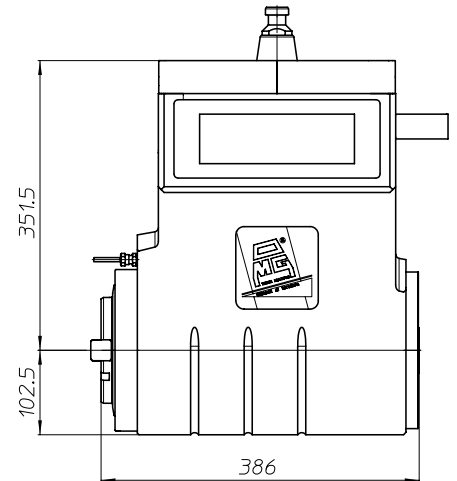
Angle head TAS12609

- Power up to 50 kW
- Torque 800 Nm
- Ratio I-O: 1-1
- Max RPM 3.000
- Output: BT50, DIN69871-A50, DIN2080-50, DIN69893-HSK100, CAPTO C8. Manual tool change by screw.
- Coolant through the tool centre and by nozzle
- Weight kg 130



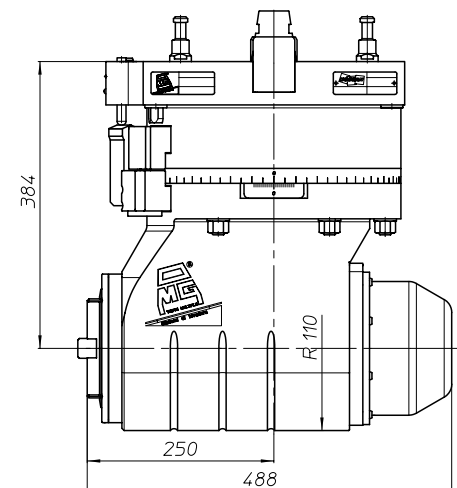
Angle head TAS18310

- Power up to 50 kW
- Torque 1.200 Nm
- Ratio I-O: 1-1
- Max RPM 2.500
- Output: BT50, DIN69871-A50, DIN2080-50, DIN69893-HSK100, CAPTO C8. Manual tool change by screw.
- Coolant through the nozzle
- Weight kg 215



Angle head TAS07408

- Power up to 35 kW
- Torque 600 Nm
- Ratio I-O: 1-2
- Max RPM 3.000
- ATC output: BT50, DIN69871-A50, DIN69893-HSK100, CAPTO C8.
- Manual C axis rotation
- Coolant through the tool centre
- Weight kg 265

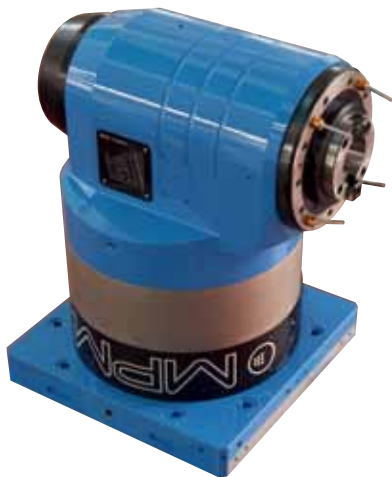
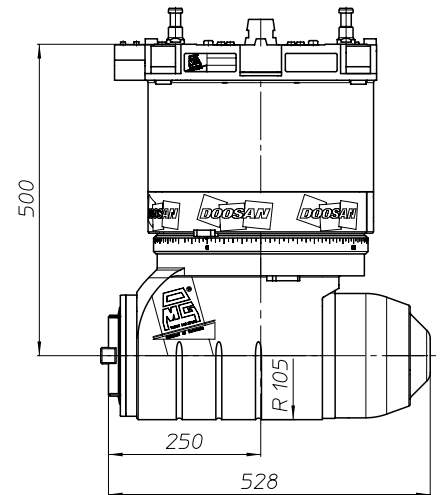


Automatic Angle Head



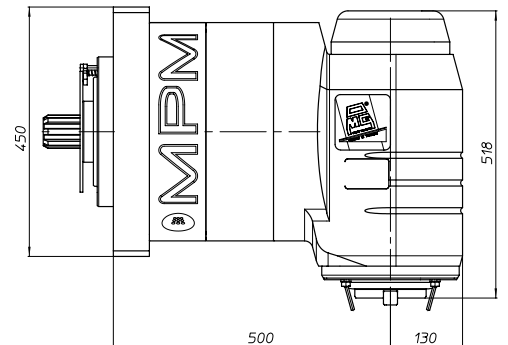
Angle head TAS33108

- Power up to 35 kW
- Torque 850 Nm
- Ratio I-O: 1-2
- Max RPM 4.000
- ATC output: BT50, DIN69871-A50, DIN69893-HSK100, CAPTO C8.
- Automatic C axis rotation: step 1° or 2,5°
- Coolant through the tool centre
- Weight kg 400



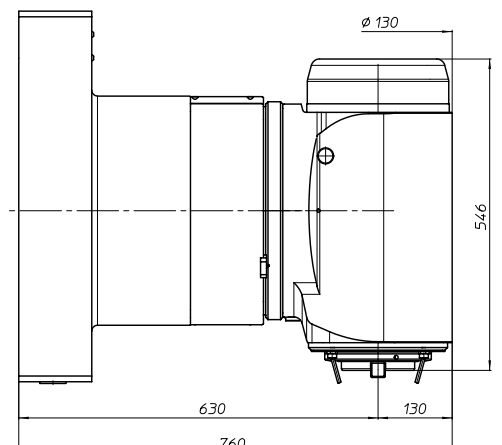
Angle head TAS07710

- Power up to 70 kW
- Torque 1.100 Nm
- Ratio I-O: 1-1
- Max RPM 5.000
- Atc output: BT50, DIN69871-A50, DIN69893-HSK100, CAPTO C8
- Automatic C axis rotation: step 1° or 2,5°
- Cooling on all axis
- Coolant through the tool centre
- Weight kg 550



Angle head TAS06411

- Power up to 70 kW
- Torque 2.500 Nm
- Ratio I-O: 1-1
- Max RPM 2.500
- Atc output: BT50, DIN69871-A50, DIN69893-HSK100, CAPTO C8
- Automatic C axis rotation: step 1° or 2,5°
- Coolant through the tool centre
- Weight kg 720

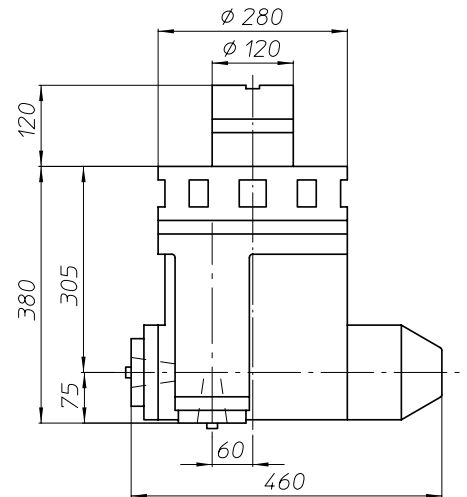


Twin Angle Head



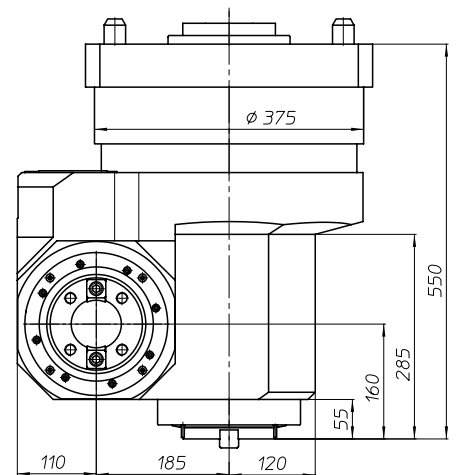
Twin spindle angle head HV401

- Power up to 20 kW
- Torque 500 Nm on horizontal spindle
- Ratio I-O: 1-1
- Max RPM 2.500
- ATC output: BT40, DIN69871-A40, DIN69893-HSK63
- Coolant through the tool centre
- Weight kg 130



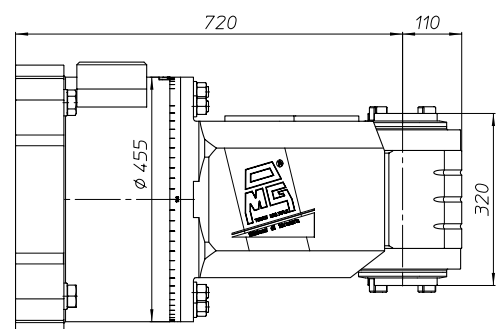
Twin spindle angle head HW501

- Power up to 50 kW
- Torque 900 Nm on horizontal spindle
- Booth spindle cooling
- Ratio I-O: 1-1
- Max RPM 3.000
- ATC output: BT50, DIN69871-A50, DIN69893-HSK100
- Coolant through the tool centre
- Weight kg 500



Twin spindle angle head TAS28307

- Power up to 40 kW
- Torque 750 Nm
- Ratio I-O: 1-1
- Max RPM 2.000
- Double output: BT50, DIN69871-A50, DIN69893-HSK100. Manual tool change
- C axis, manual rotation by worm gear
- Weight kg 560

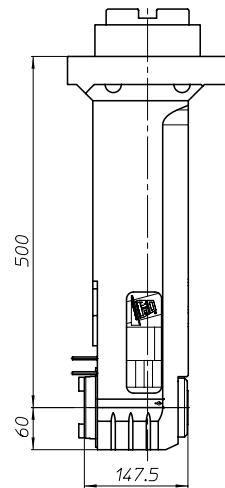


Extended Angle Head



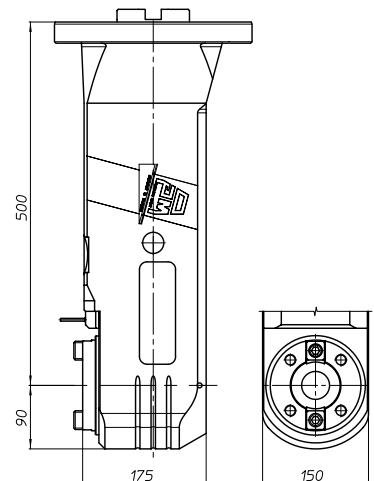
Extended angle head **TAS23408**

- Power up to 25 kW
- Torque 300 Nm
- Ratio I-O: 1-1
- Max RPM 3.000
- Output: BT40, DIN69871-A40, DIN2080-40, DIN69893-HSK63, CAPTO C6. Manual tool change by screw.
- Weight kg 65



Extended angle head **TAS06911**

- Power up to 35 kW
- Torque 230 Nm
- Ratio I-O: 1-1
- Max RPM 2.500
- Output: BT50, DIN69871-A50, DIN2080-50, DIN69893-HSK100, CAPTO C8. Manual tool change by screw.
- Weight kg 125

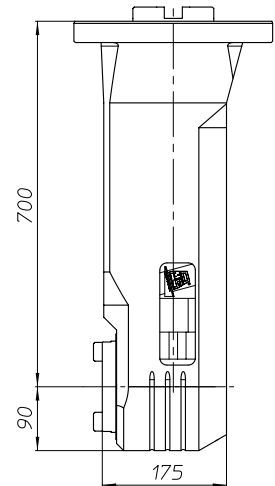


Extended Angle Head



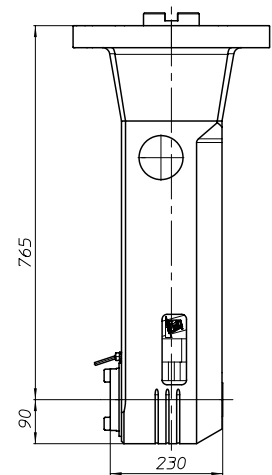
Extended angle head **TAS18708**

- Power up to 35 kW
- Torque 230 Nm
- Ratio I-O: 1-1
- Max RPM 2.500
- Output: BT50, DIN69871-A50, DIN2080-50, DIN69893-HSK100, CAPTO C8. Manual tool change by screw.
- Weight kg 160



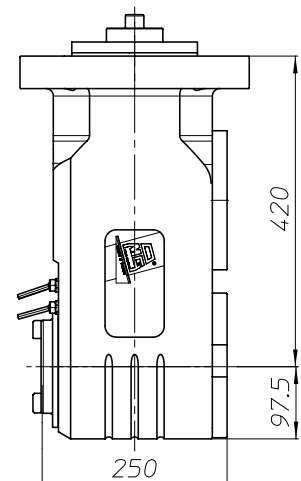
Extended angle head **TAS23809**

- Power up to 40 kW
- Torque 600 Nm
- Ratio I-O: 1-1
- Max RPM 2.000
- Output: BT50, DIN69871-A50, DIN69893-HSK100. Manual tool change by pull stud.
- Weight kg 200



Extended angle head **TAS27610**

- Power up to 70 kW
- Torque 950 Nm
- Ratio I-O: 1-1
- Max RPM 2.500
- ATC output: BT50, DIN69871-A50, DIN69893-HSK100, CAPTO C8
- Weight kg 180

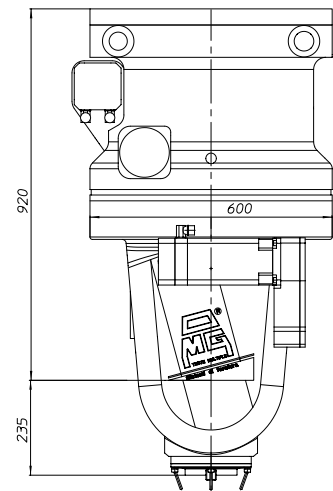


Tilting Angle Head



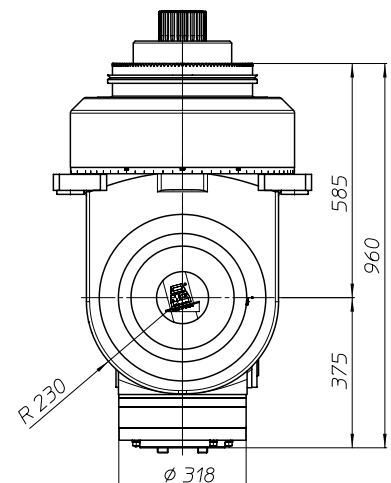
Tilting angle head TAV19009

- Power up to 60 kW
- Torque 1.800 Nm
- A axis: $\pm 120^\circ$. C axis: $\pm 185^\circ$
- A and C axis rotation: by worm gear and axis motor. Clamping axis by brake
- Ratio I-O: 1-1
- Max RPM 2.200
- ATC output: BT50, DIN69871-A50, DIN69893-HSK100, CAPTO C8
- Coolant through the tool centre
- Weight kg 1.700



Tilting angle head TAV28610

- Power up to 100 kW
- Torque 5.000 Nm
- A axis: $-2^\circ + 92^\circ$. C axis: $\pm 360^\circ$
- A and C axis rotation: manually by worm gear
- Ratio I-O: 1-1
- Max RPM 2.000
- ATC output: BT50, DIN69871-A50, DIN69893-HSK100, CAPTO C8
- Coolant through the tool centre
- Weight kg 1.700

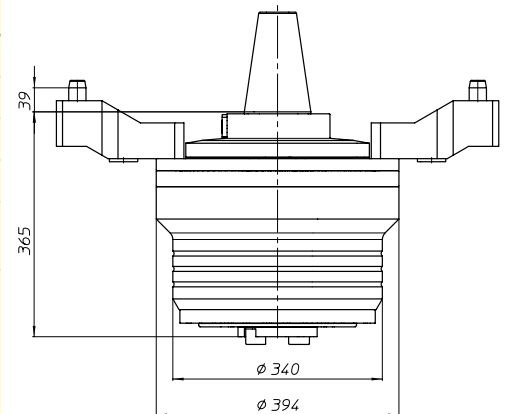


Big Spindle Speeders



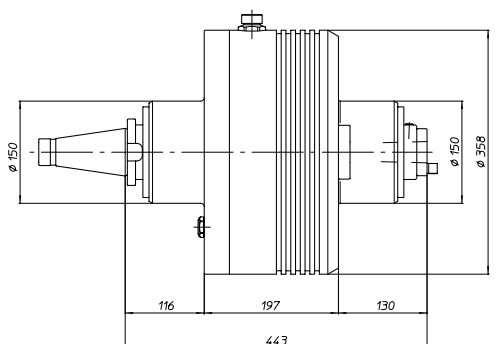
Spindle speeder MO12110

- Power up to 50 kW
- Torque 1.150 Nm
- Ratio I-O: 1-4
- Output max RPM 4.500
- Input: DIN69871 size 60
Output: DIN69871
- Weight kg 240



Spindle speeder TFS31908

- Power up to 40 kW
- Torque 500 Nm
- Ratio I-O: 1-3
- Input: max RPM 800
Output: max RPM 2.400
- Weight kg 120



Special executions



Our standard products range



Series TA



Series BAH



Series MO



Series VH

Special executions



Our standard products range



Series HT



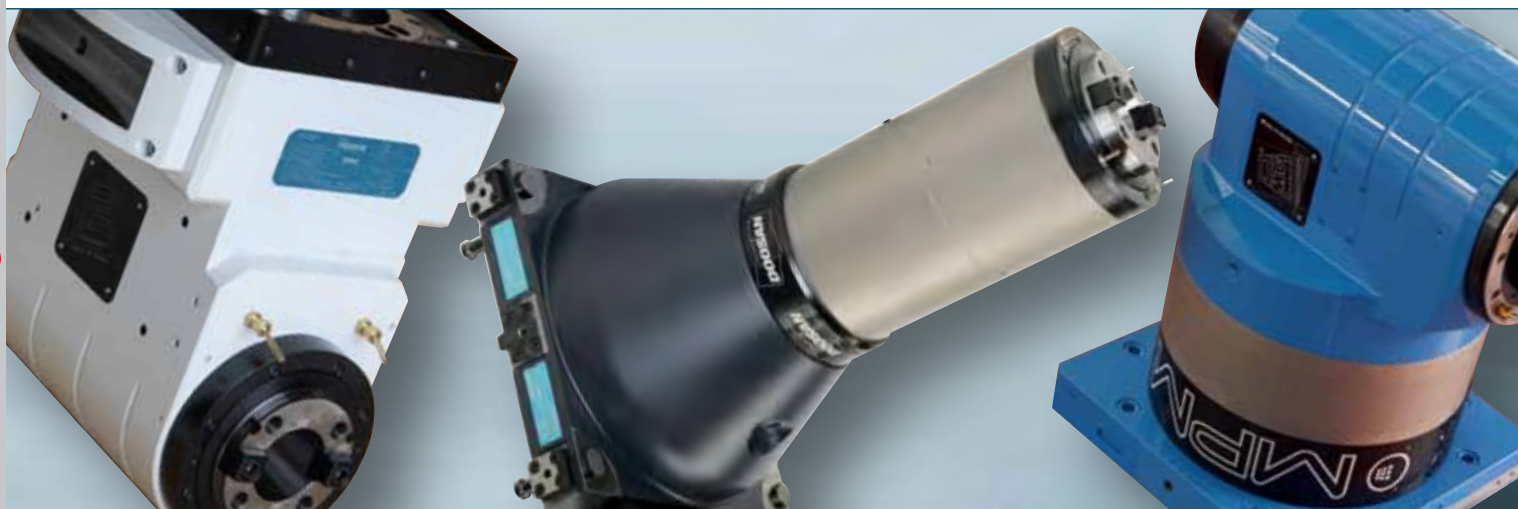
Series TSI/TSX



Series T



Series MT-TC-TC3



Made in Italy

Headquarter

O.M.G. srl

via 8 Marzo, n. 1 - 42025 CAVRIAGO (RE) - Italy

Tel. +39.0522 941627
Fax +39.0522 941951

www.omgnet.it
e-mail: omg@omgnet.it

O.M.G. NORTH AMERICA

802 Clearwater Loop, Post Falls, Idaho 83854

Ph. 866-440-8519
Fax 208-773-3021

www.omgamerica.com
e-mail: info@omgamerica.com

www.omgnet.eu
e-mail: omg@omgnet.eu