



BAH  
TA.CP  
TA  
MO  
HT  
VH  
TSI/TSX  
T  
MT-TC-TC3  
Accessori  
Accessories  
Appendice tecnica  
Technical supplement

## teste multiple a giunti universali adjustable joint multispindle heads

Le teste multiple a giunti universali sono in produzione dal 1961; nel corso degli anni hanno subito modifiche e aggiornamenti, confermando però la validità dell'idea e lasciando inalterate le caratteristiche salienti:

- possibilità di utilizzo sia in foratura che in maschiatura
- possibilità di posizionamento nello spazio dei gruppi mandrino, vincolato soltanto dalle dimensioni dello stesso e dall'area di lavoro
- adattabilità a tutti i tipi di trapani o a soluzioni speciali
- vantaggiose soprattutto quando è necessario modificare di frequente gli interassi dei fori
- ampia gamma di modelli per le diverse esigenze

Sono disponibili a magazzino le seguenti versioni:

- serie T-TS a base circolare per l'esecuzione di massimo 12 fori; massima capacità di foratura diam. mm 22, interasse minimo mm 15 e massimo mm 350
- serie TL a base lineare per l'esecuzione di massimo 12 fori; massima capacità di foratura diam. mm 22, interasse minimo mm 17 e massimo mm 610
- serie TR a base rettangolare per l'esecuzione di massimo 16 fori; massima capacità di foratura diam. mm 22, interasse minimo mm 32 e massimo mm 395x345
- serie TM-TRM a base circolare e rettangolare per l'esecuzione di massimo 26 fori; grazie alle loro caratteristiche tecniche possono eseguire i più diversi schemi di foratura e maschiatura su macchine con potenza adeguata.

Il catalogo è congegnato per avere un preciso riscontro delle caratteristiche di tutte le teste a giunti universali e delle varie soluzioni possibili con esse; le nuove schede tecniche, gli esempi di attrezzature, gli accessori e le tabelle Vi guideranno nella scelta opportuna. Qualora il Vs. lavoro non sia eseguibile con questa serie di teste, il Ns. ufficio tecnico Vi fornirà la soluzione alternativa con la serie VH ad interassi variabili o con teste ad assi fissi appositamente disegnate e costruite.

*The universal joint multispindle heads have been in production since 1961; over the years they have been modified and updated, without however refuting the goodness of the idea and always leaving major features unaltered:*

- possibility of using for both drilling and tapping
- possibility of multi-positioning the spindle units, restricted only by the size of the spindle and of the working area
- suitable for all types of drills or for special solutions
- especially useful when the need arises to frequently change the hole centre distances
- broad range of models for different requirements

*The following versions are in stock:*

- series T-TS with round base for making up to 12 holes; max drilling capacity dia. 22 mm, minimum centre distance 15 mm, max centre distance 350 mm
- series TL with linear base for making up to 12 holes; max drilling capacity dia. 22 mm, minimum centre distance 17 mm, max centre distance 610 mm
- series TR with rectangular base for making up to 16 holes; max drilling capacity dia. 22 mm, minimum centre distance 32 mm, max centre distance 395x345 mm
- series TM-TRM with round and rectangular base for making up to 26 holes; thanks to their technical features, they are able to execute a series of different drilling and tapping patterns on machines of adequate power.

*The catalogue is compiled so as to provide a precise reference for all the adjustable joint heads and the various possible solutions these offer. Thanks to the new technical sheets, equipment examples, accessories and charts, you will find making the right choice much easier.*

*In the event of this series of heads not providing the solution for your job, our technical department can provide alternative solutions with the variable centre distance VH series or fixed-axis heads, specially designed and made for you.*

T2 .....	8-2
T4 .....	8-3
T7 .....	8-4
T10 .....	8-5
T12/TS12 .....	8-6
T15/TS15 .....	8-7
T18/TS18 .....	8-8
T22/TS22 .....	8-9
TL20/4 .....	8-10
TL20/6 .....	8-11
TL20/8 .....	8-12
TL40/12 .....	8-13
TL40/16 .....	8-14
TL40/22 .....	8-15
TL60/12 .....	8-16
TL60/16 .....	8-17
TL60/22 .....	8-18
TR2/12 .....	8-19
TR2/16 .....	8-20
TR5/12 .....	8-21
TR5/16 .....	8-22
TR8/22 .....	8-23
TM400 .....	8-24
TM500 .....	8-25
TRM43 .....	8-26
TRM73 .....	8-27
TRM43-2P .....	8-28
TRM73-2P .....	8-29
Mandrini per TM-TRM/TM-TRM spindles...	8-30
Attrezzature/Equipment .....	8-32
Manicotto di collegamento/Connection collar ..	8-34
Accessori/Accessories .....	10-1



# T2

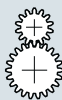
Codice testa  
Head code

Codice mandrino  
Spindle code



N° prese di moto  
Nr. spindle drives

08



Rapporto  
Ratio

1-1



Capacità di foratura  
Drilling capacity

4



Maschiatura  
Tapping

M4



Attacco utensile  
Type of spindle

ER8



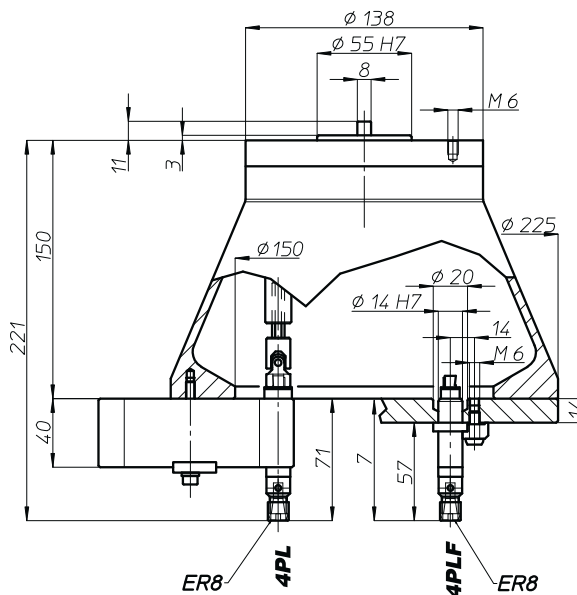
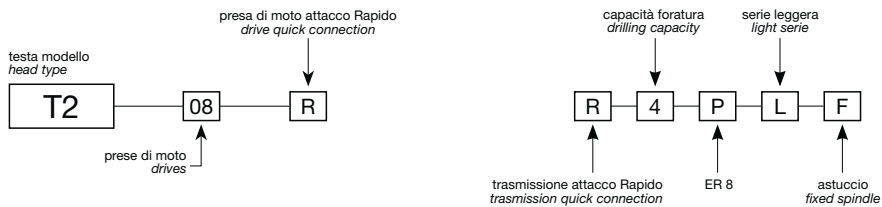
Peso gruppo testa  
Head weight

Kg 3,25

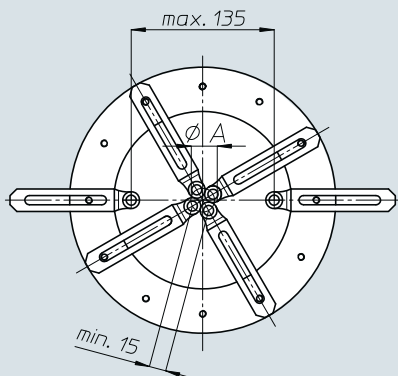


Peso gruppo mandrino  
Spindle-set weight

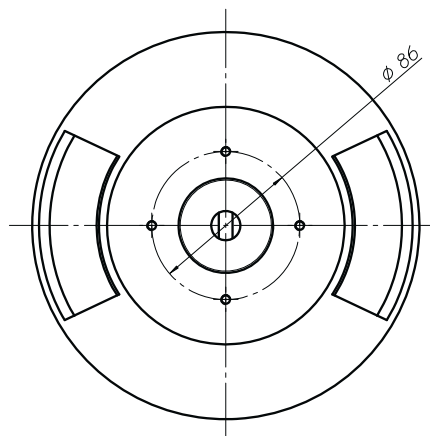
Kg 0,3



area di lavoro  
working area



ø A	n° mandrini n° spindles
15	2
17,5	3
21,5	4
26	5
30	6
35	7
39,5	8



BAH

TA-CP

TA

MO

HT

VH

TSI/TSX

T

MT-TC-TC3

Accessori  
Accessories

Appendice tecnica  
Technical supplement

8-2

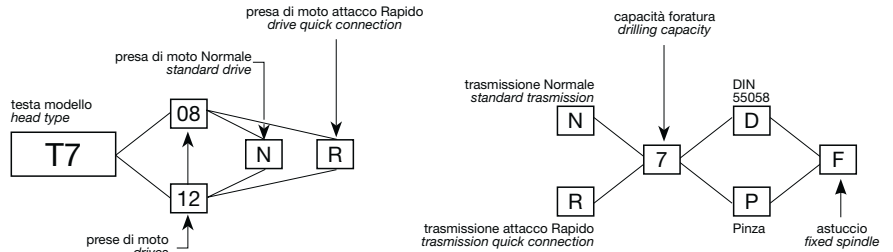




# T7

Codice testa  
Head code

Codice mandrino  
Spindle code



N° prese di moto  
Nr. spindle drives

08-12

Rapporto  
Ratio

1-1

Capacità di foratura  
Drilling capacity  
acciaio R=500 N/mm<sup>2</sup>  
ghisa: GG25

6  
7

Maschiatura  
Tapping

M5

Attacco utensile  
Type of spindle

D  
P

DIN 55058 Ø10  
ER11

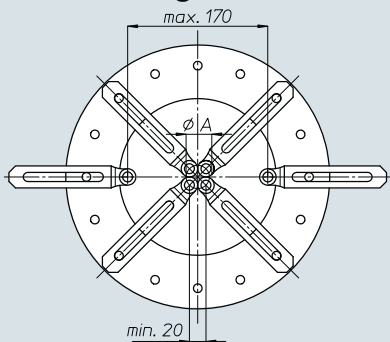
Peso gruppo testa  
Head weight

Kg 10

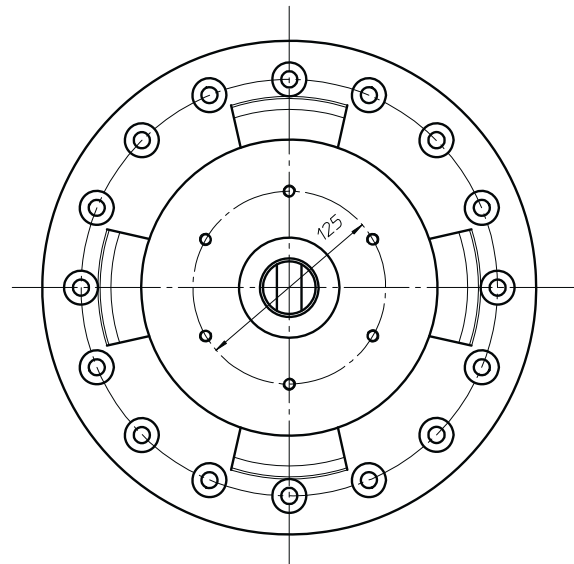
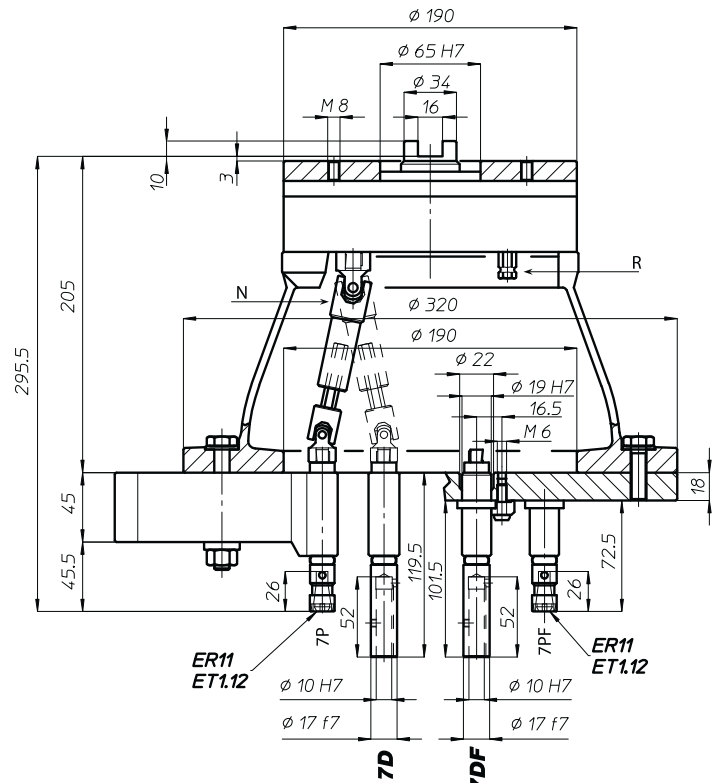
Peso gruppo mandrino  
Spindle-set weight

Kg 1,1

## area di lavoro working area



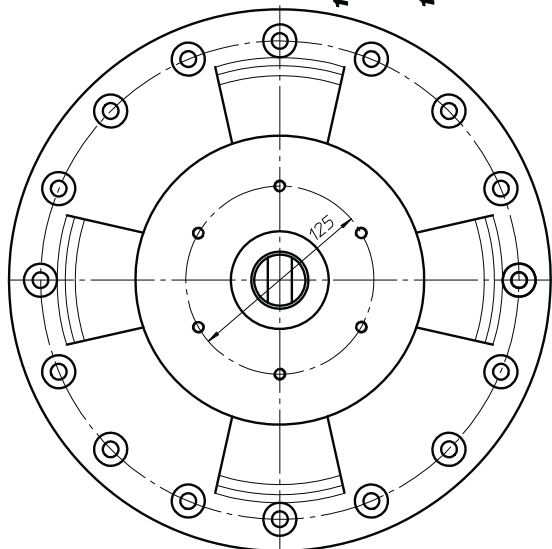
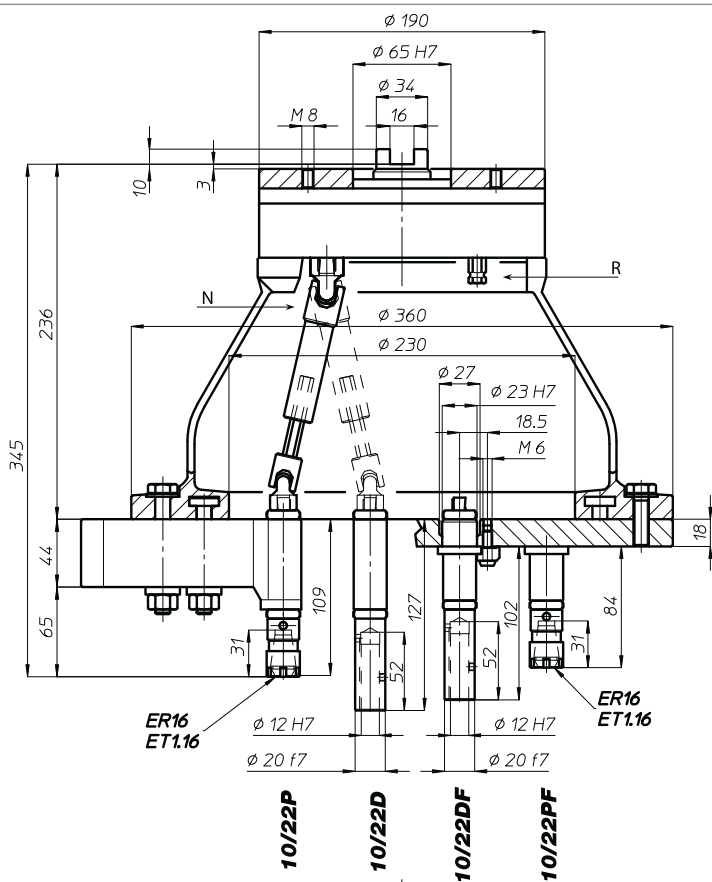
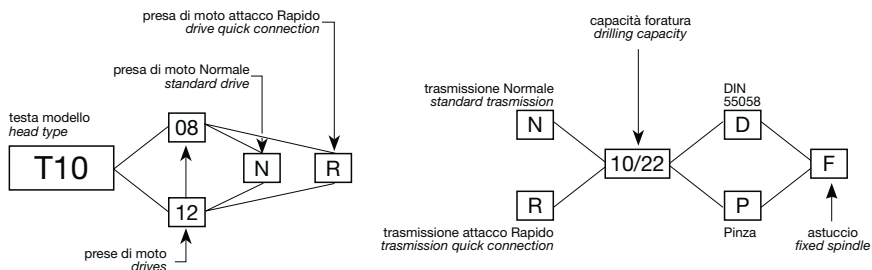
Accessori Accessories	Accessori Accessories	n° mandrini n° spindles
23,5		3
28,5		4
34,5		5
40,5		6
46,5		7
52,5		8
59		9
65,5		10
71,5		11
77,5		12



# T10

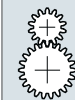
Codice testa  
Head code

Codice mandrino  
Spindle code



N° prese di moto  
Nr. spindle drives

08-12



Rapporto  
Ratio

1-1



Capacità di foratura  
Drilling capacity  
acciaio R=500 N/mm<sup>2</sup>  
ghisa: GG25

8  
10



Maschiatura  
Tapping

M6



Attacco utensile  
Type of spindle

DIN 55058  $\phi 12$   
ER16



Peso gruppo testa  
Head weight

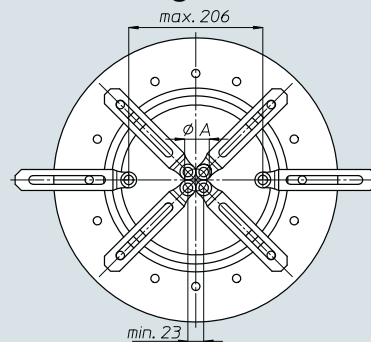
Kg 12



Peso gruppo mandrino  
Spindle-set weight

Kg 1,5

area di lavoro  
working area



$\phi A$

n° mandrini  
n° spindles

27	3
33	4
39,5	5
46,5	6
53,5	7
60,5	8
67,5	9
75	10
82	11
89,5	12



BAH

TA.CP

TA

MO

HT

VH

TSI/TSX

T

MT-TC-TC3

Accessori  
Accessories

Appendice tecnica  
Technical supplement

8-5

# T12-TS12



Codice testa  
Head code

Codice mandrino  
Spindle code

N° prese di moto  
Nr. spindle drives

08-12

Rapporto  
Ratio

1-1

Capacità di foratura  
Drilling capacity  
acciaio R=500 N/mm<sup>2</sup>  
ghisa: GG25

10  
12

Maschiatura  
Tapping

M8

Attacco utensile  
Type of spindle

D P DIN 55058 Ø16  
ER20

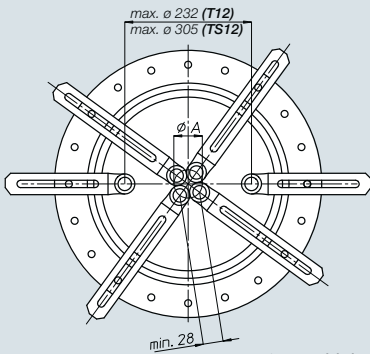
Peso gruppo testa  
Head weight

T12: Kg 20  
TS12: Kg 22,5

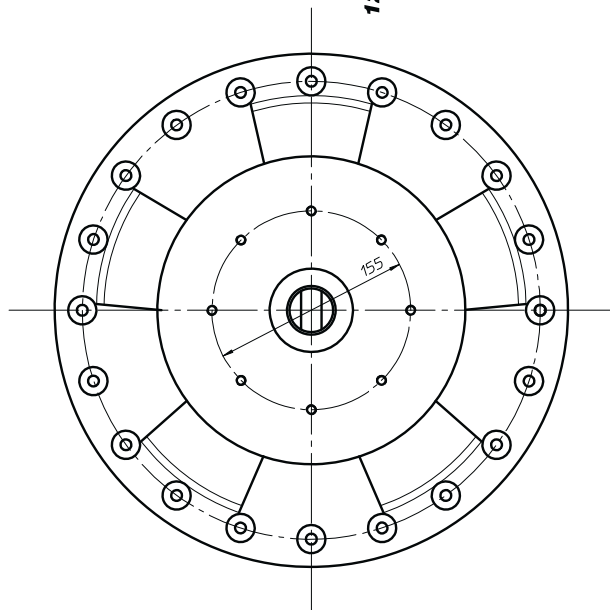
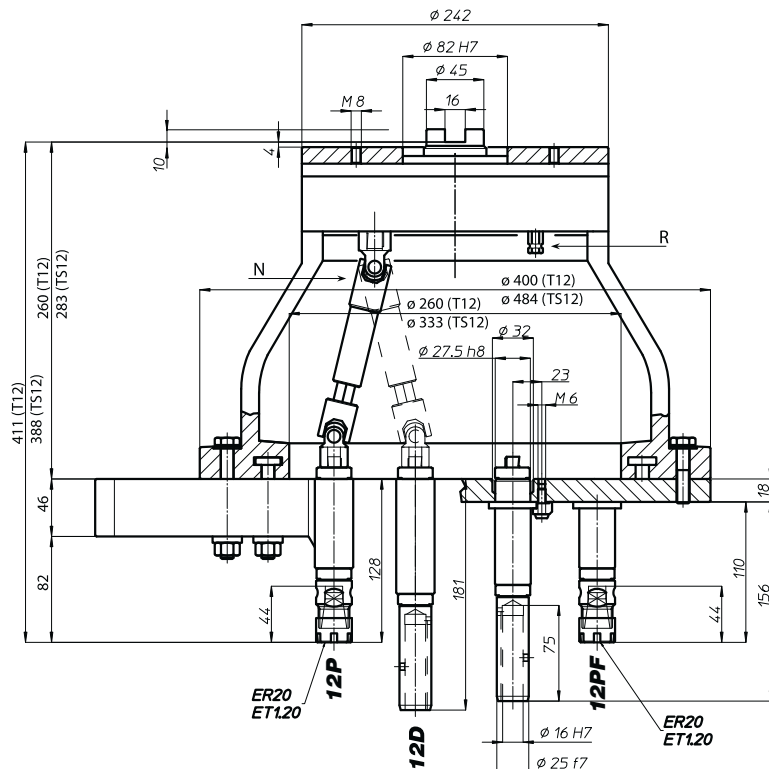
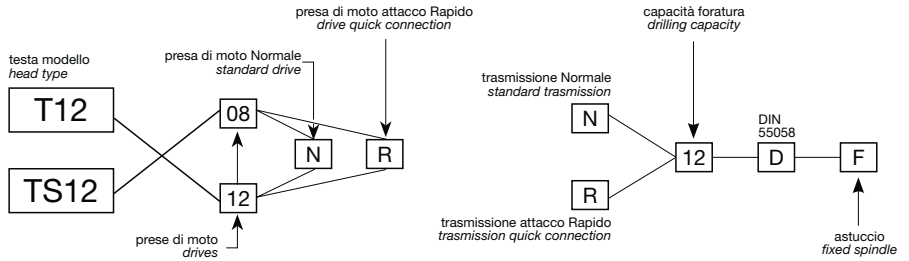
Peso gruppo mandrino  
Spindle-set weight

Kg 2

## area di lavoro working area



Ø A	n° mandrini n° spindles
33	3
40	4
48	5
56,5	6
65	7
74	8
82,5	9
91	10
100	11
108,5	12



BAH

TA-CP

TA

MO

HT

VH

TSI/TSX

T

MT-TC-TC3

Accessori  
Accessories

Appendice tecnica  
Technical supplement

8-6





# T18-TS18

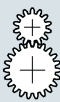
Codice testa  
Head code

Codice mandrino  
Spindle code



N° prese di moto  
Nr. spindle drives

08



Rapporto  
Ratio

1-1



Capacità di foratura  
Drilling capacity  
acciaio R=500 N/mm<sup>2</sup>  
ghisa: GG25

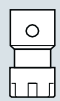
16

18



Maschiatura  
Tapping

M14



Attacco utensile  
Type of spindle  
D

DIN 55058 Ø25



Peso gruppo testa  
Head weight

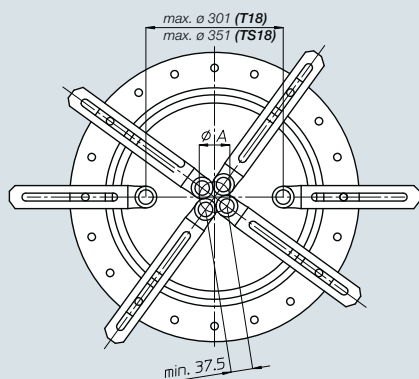
T18: Kg 25  
TS18: Kg 26,5



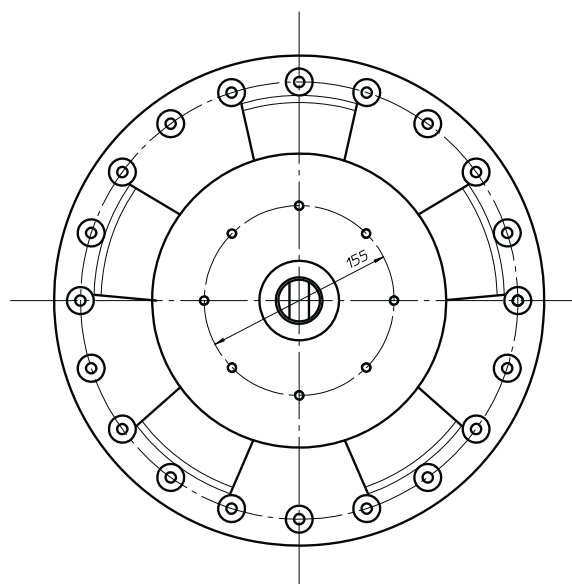
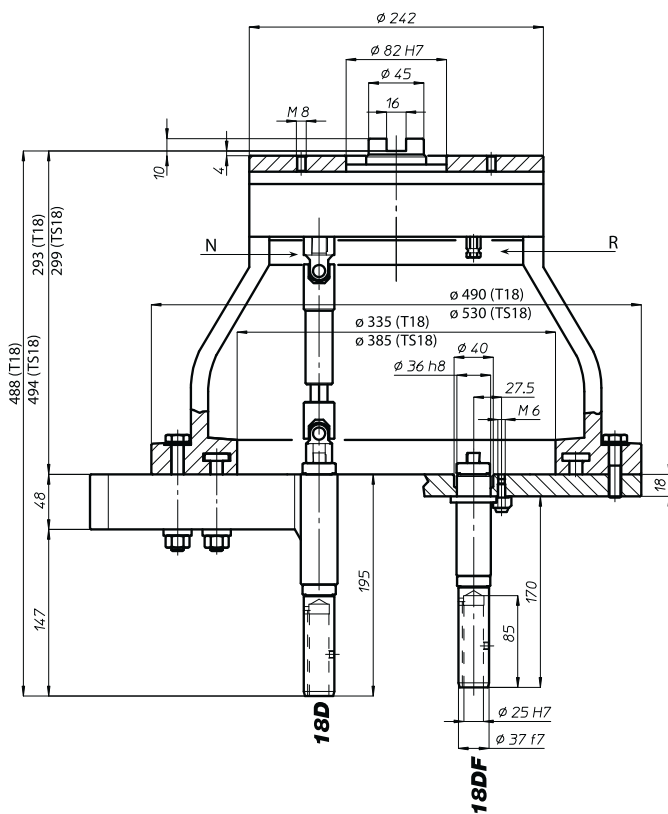
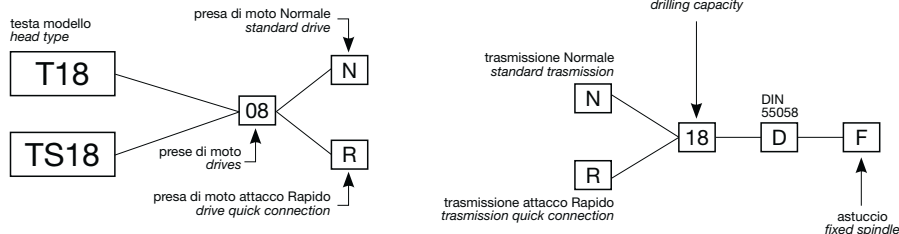
Peso gruppo mandrino  
Spindle-set weight

Kg 3,3

area di lavoro  
working area



Ø A	n° mandrini n° spindles
44	3
53,5	4
64,5	5
75,5	6
87	7
98,5	8



BAH

TA-CP

TA

MO

HT

VH

TSI/TSX

T

MT-TC-TC3

Accessori  
Accessories

Appendice tecnica  
Technical supplement

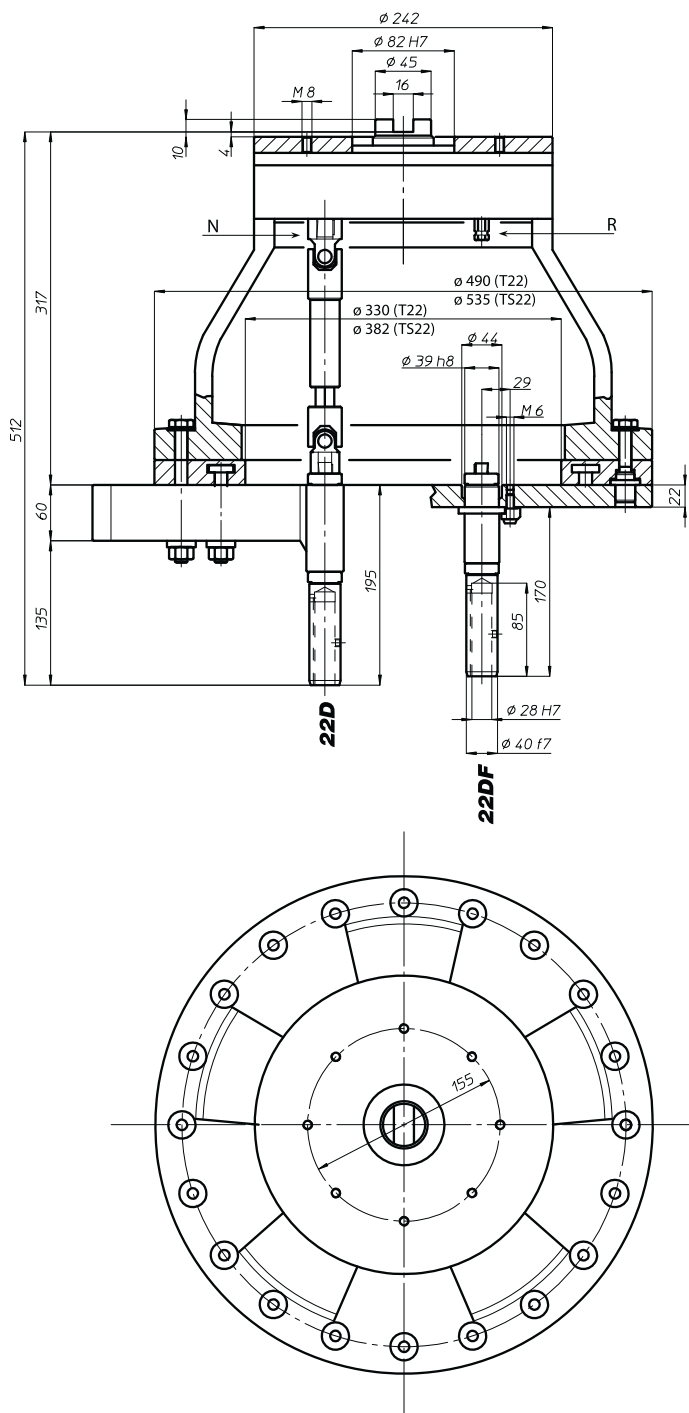
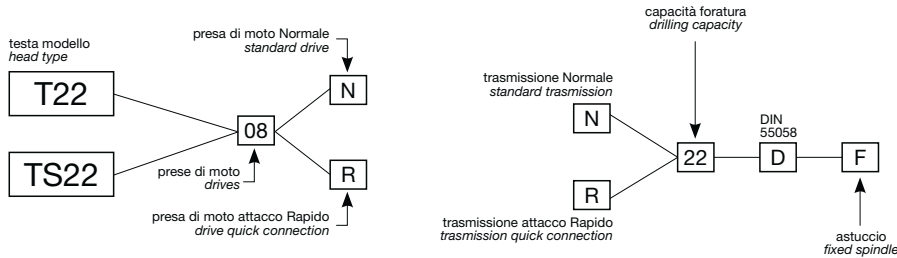
8-8



# T22-TS22

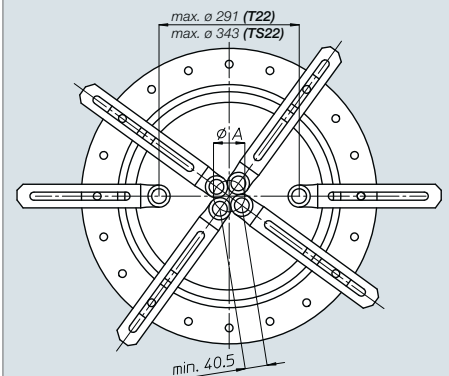
Codice testa  
Head code

Codice mandrino  
Spindle code



	N° prese di moto Nr. spindle drives	08
	Rapporto Ratio	1-1
	Capacità di foratura Drilling capacity acciaio R=500 N/mm <sup>2</sup> ghisa: GG25	20 22
	Maschiatura Tapping	M16
	Attacco utensile Type of spindle D	DIN 55058 Ø28
	Peso gruppo testa Head weight	T22: Kg 38,5 TS22: Kg 41
	Peso gruppo mandrino Spindle-set weight	Kg 5,5

area di lavoro  
working area



ø A	n° mandrini n° spindles
47,5	3
58	4
69,5	5
81,5	6
94	7
106,5	8



BAH

TA.CP

TA

MO

HT

VH

TSI/TSX

T

MT-TC-TC3

Accessori  
Accessories

Appendice tecnica  
Technical supplement

8-9

# TL20/4



Codice testa  
Head code

Codice mandrino  
Spindle code



N° prese di moto  
Nr. spindle drives

08



Rapporto  
Ratio

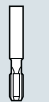
1-1



Capacità di foratura  
Drilling capacity  
acciaio R=500 N/mm<sup>2</sup>  
ghisa: GG25

4

5



Maschiatura  
Tapping

M4



Attacco utensile  
Type of spindle  
P

ER11



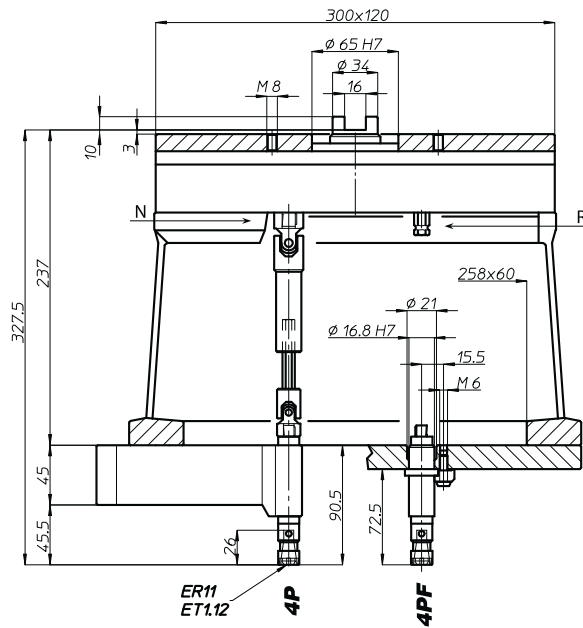
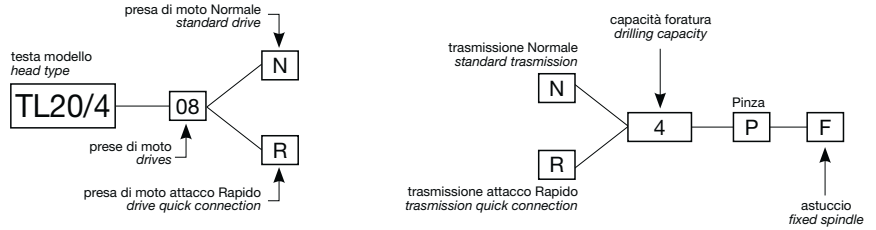
Peso gruppo testa  
Head weight

Kg 13,5

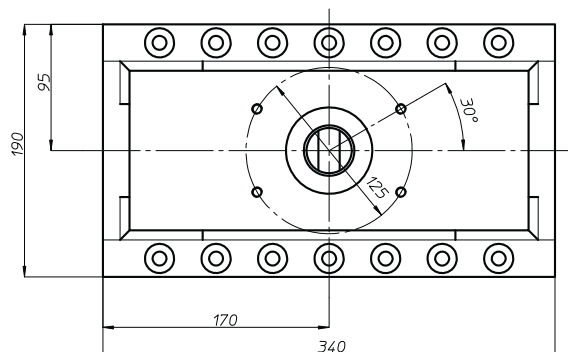
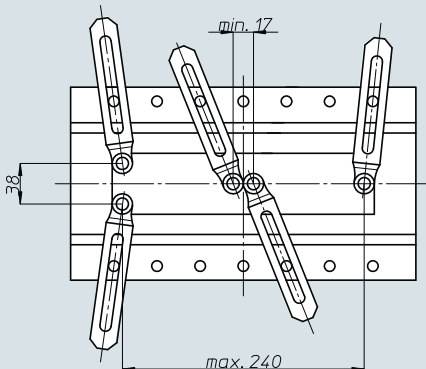


Peso gruppo mandrino  
Spindle-set weight

Kg 1



area di lavoro  
working area





# TL20/8

Codice testa  
Head code

Codice mandrino  
Spindle code



N° prese di moto  
Nr. spindle drives

08



Rapporto  
Ratio

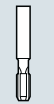
1-1



Capacità di foratura  
Drilling capacity  
acciaio R=500 N/mm<sup>2</sup>  
ghisa: GG25

8

10



Maschiatura  
Tapping

M6



Attacco utensile  
Type of spindle

D

DIN 55058 Ø12

P

ER16



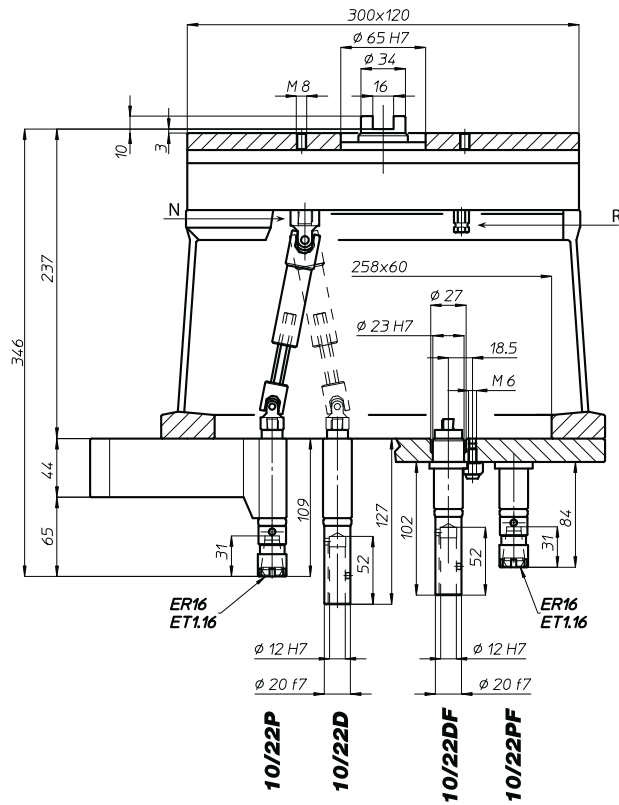
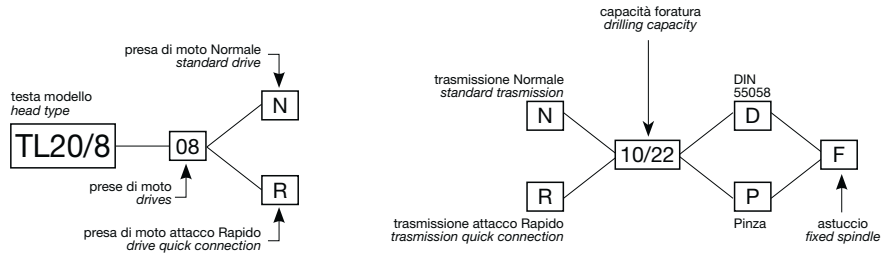
Peso gruppo testa  
Head weight

Kg 13,5

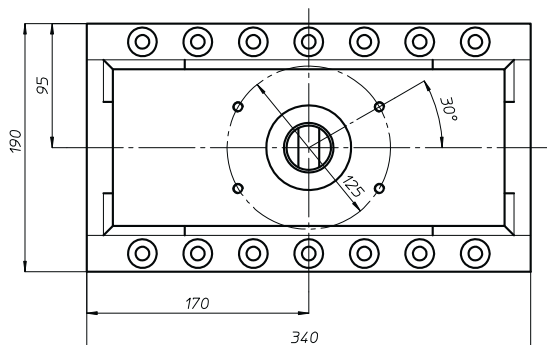
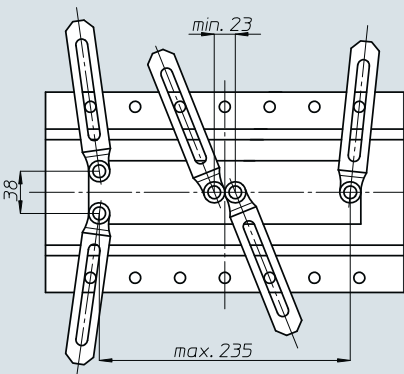


Peso gruppo mandrino  
Spindle-set weight

Kg 1,5



area di lavoro  
working area



BAH

TA-CP

TA

MO

HT

VH

TSI/TSX

T

MT-TC-TC3

Accessori  
Accessories

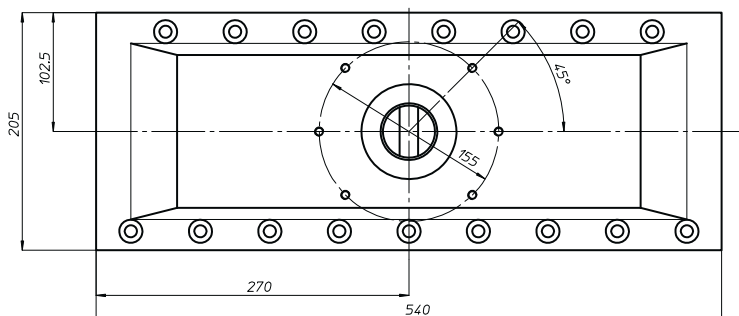
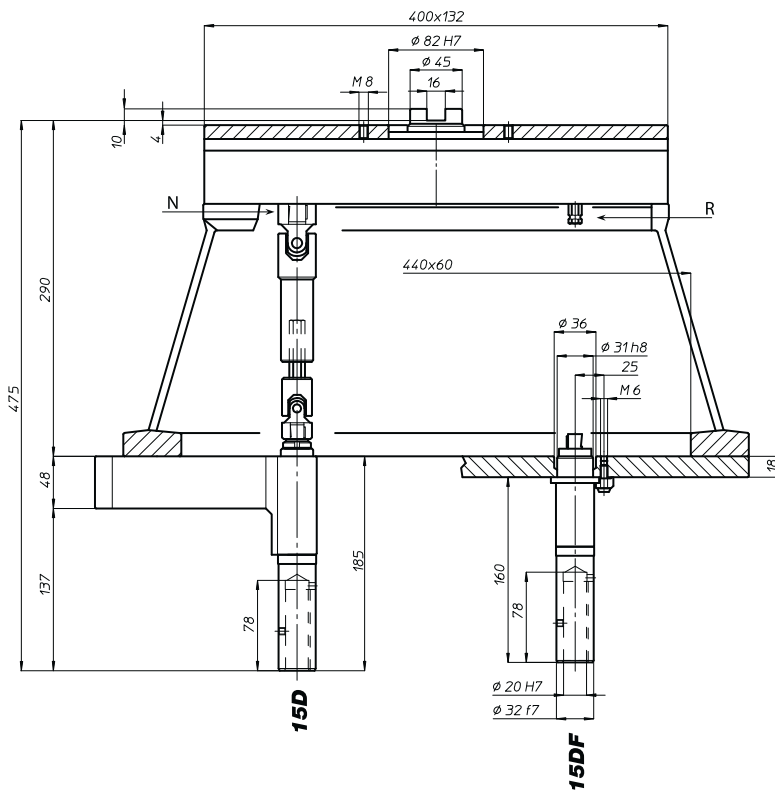
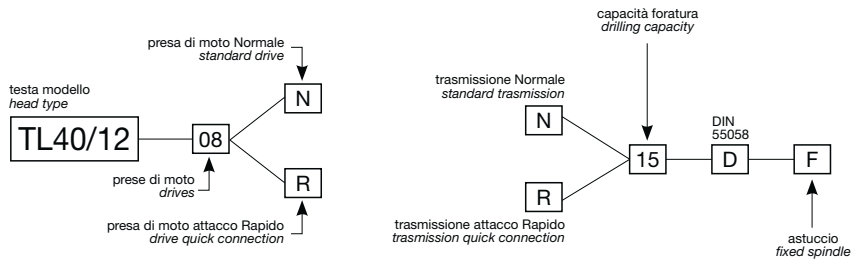
Appendice tecnica  
Technical supplement



# TL40/12

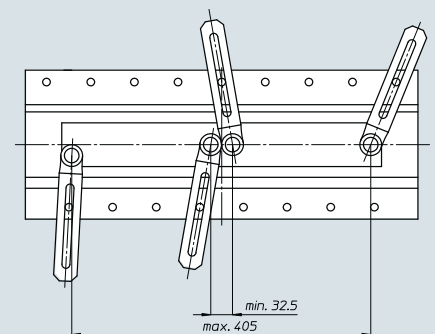
Codice testa  
Head code

Codice mandrino  
Spindle code



	N° prese di moto Nr. spindle drives	08
	Rapporto Ratio	1-1
	Capacità di foratura Drilling capacity acciaio R=500 N/mm <sup>2</sup> ghisa: GG25	13 15
	Maschiatura Tapping	M12
	Attacco utensile Type of spindle D	DIN 55058 Ø20
	Peso gruppo testa Head weight	Kg 25
	Peso gruppo mandrino Spindle-set weight	Kg 2,5

area di lavoro  
working area



BAH

TA.CP

TA

MO

HT

VH

TSI/TSX

T

MT-TC-TC3

Accessori  
Accessories

Appendice tecnica  
Technical supplement

# TL40/16



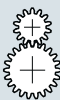
Codice testa  
Head code

Codice mandrino  
Spindle code



N° prese di moto  
Nr. spindle drives

08



Rapporto  
Ratio

1-1



Capacità di foratura  
Drilling capacity  
acciaio R=500 N/mm<sup>2</sup>  
ghisa: GG25

16

18



Maschiatura  
Tapping

M14



Attacco utensile  
Type of spindle

D DIN 55058 Ø25



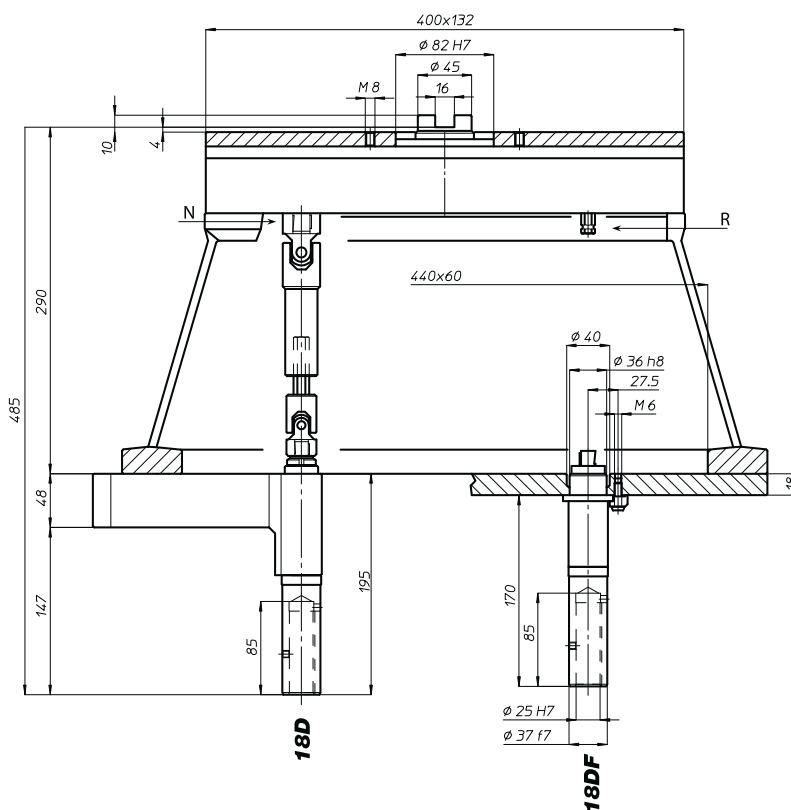
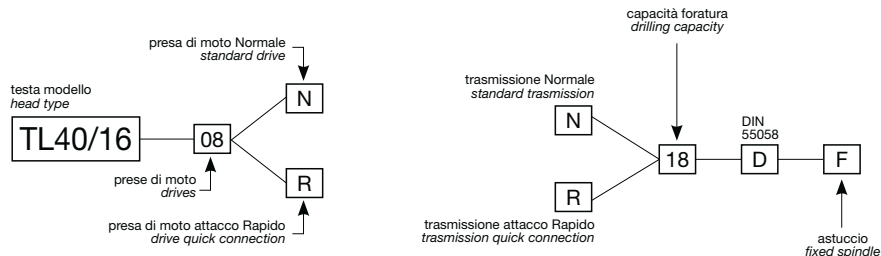
Peso gruppo testa  
Head weight

Kg 26

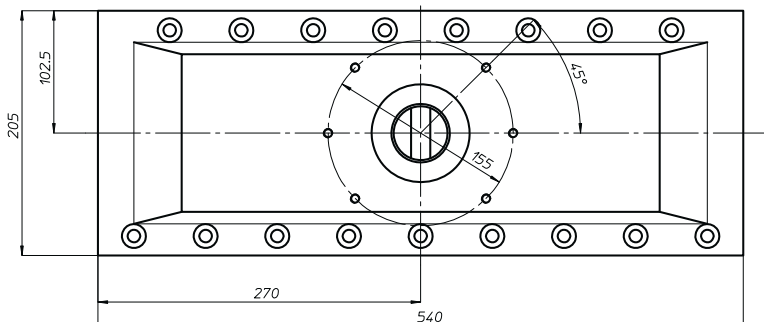
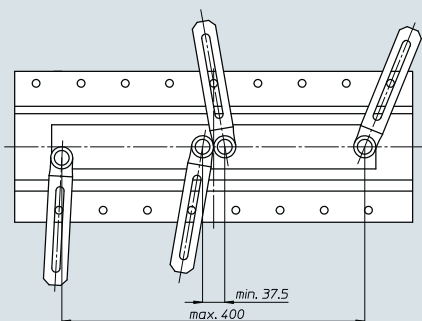


Peso gruppo mandrino  
Spindle-set weight

Kg 2,5



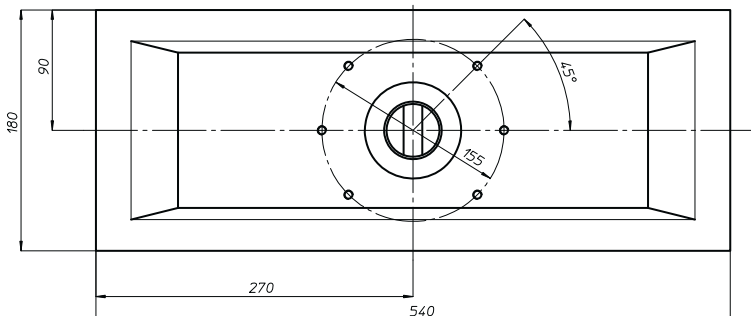
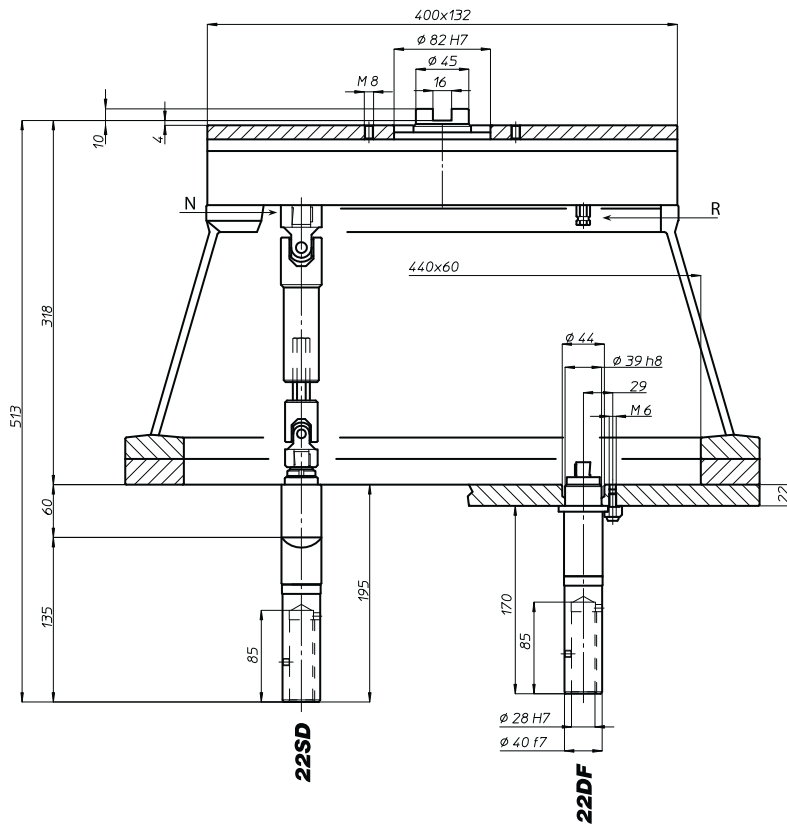
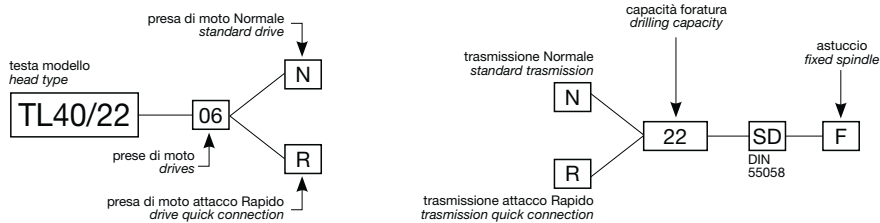
area di lavoro  
working area



# TL40/22

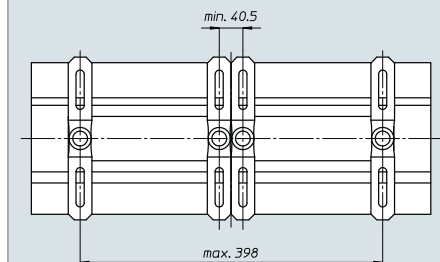
Codice testa  
Head code

Codice mandrino  
Spindle code



	N° prese di moto Nr. spindle drives	06
	Rapporto Ratio	1-1
	Capacità di foratura Drilling capacity acciaio R=500 N/mm <sup>2</sup> ghisa: GG25	20 22
	Maschiatura Tapping	M16
	Attacco utensile Type of spindle D	DIN 55058 Ø28
	Peso gruppo testa Head weight	Kg 37
	Peso gruppo mandrino Spindle-set weight	Kg 5

area di lavoro  
working area



BAH

TA.CP

TA

MO

HT

VH

TSI/TSX

T

MT-TC-TC3

Accessori  
Accessories

Appendice tecnica  
Technical supplement

# TL60/12



Codice testa  
Head code

Codice mandrino  
Spindle code



N° prese di moto  
Nr. spindle drives

08-12



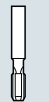
Rapporto  
Ratio

1-1



Capacità di foratura  
Drilling capacity  
acciaio R=500 N/mm<sup>2</sup>  
ghisa: GG25

13  
15



Maschiatura  
Tapping

M12



Attacco utensile  
Type of spindle

D DIN 55058 Ø20



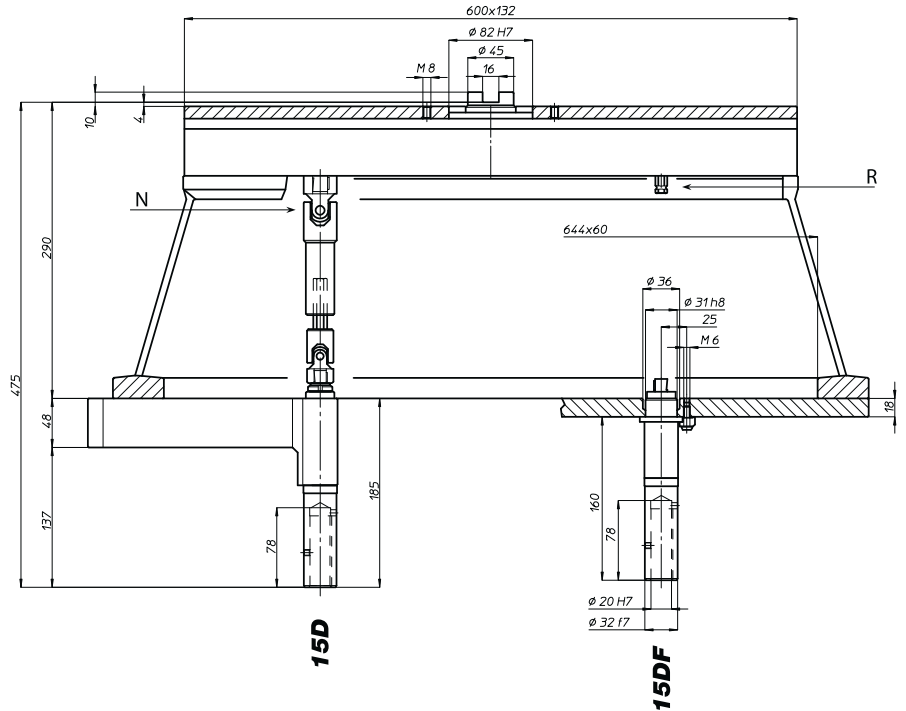
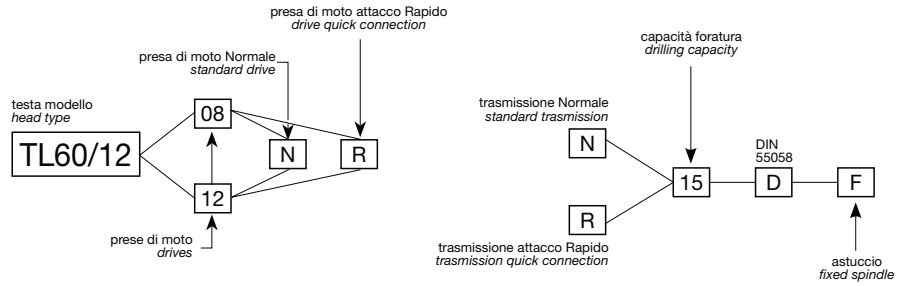
Peso gruppo testa  
Head weight

Kg 34,5

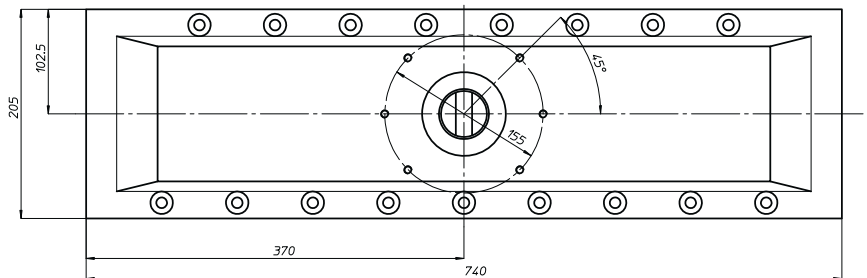
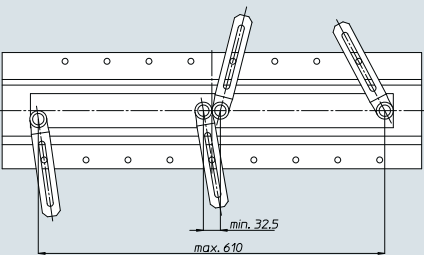


Peso gruppo mandrino  
Spindle-set weight

Kg 2,5



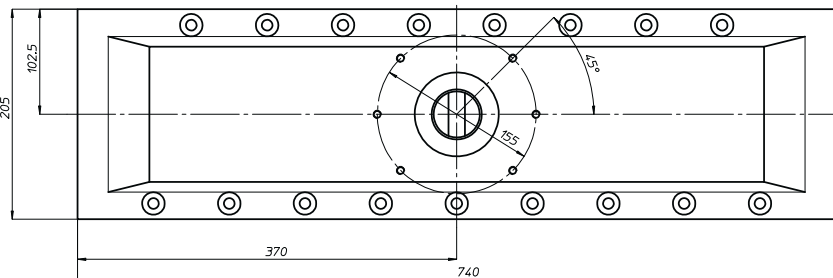
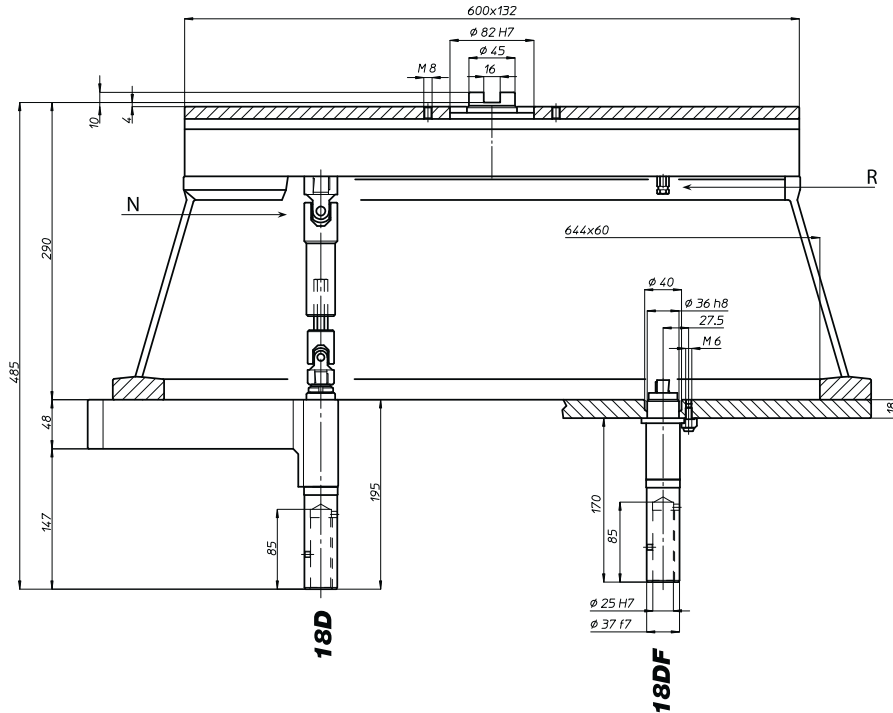
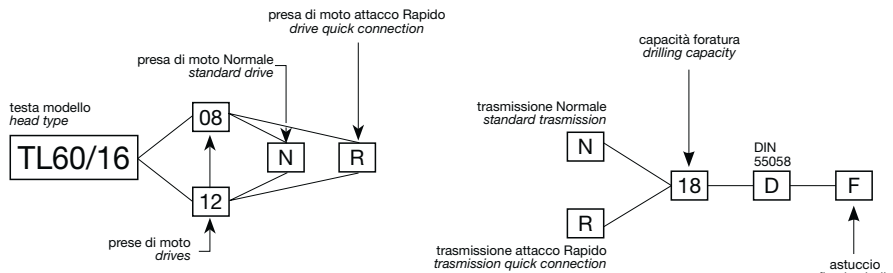
area di lavoro  
working area



# TL60/16

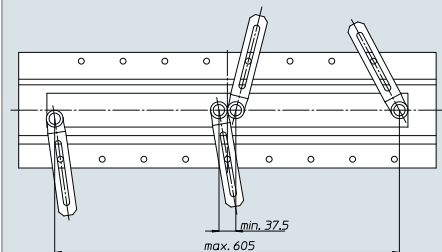
Codice testa  
Head code

Codice mandrino  
Spindle code



	N° prese di moto Nr. spindle drives	08-12
	Rapporto Ratio	1-1
	Capacità di foratura Drilling capacity acciaio R=500 N/mm <sup>2</sup> ghisa: GG25	16 18
	Maschiatura Tapping	M14
	Attacco utensile Type of spindle D	DIN 55058 $\phi 25$
	Peso gruppo testa Head weight	Kg 36
	Peso gruppo mandrino Spindle-set weight	Kg 2,5

area di lavoro  
working area



BAH

TA.CP

TA

MO

HT

VH

TSI/TSX

T

MT-TC-TC3

Accessori  
Accessories

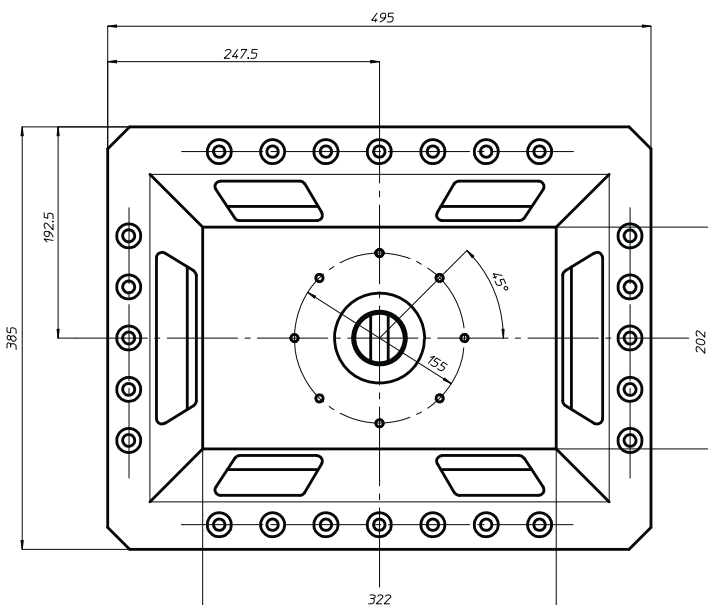
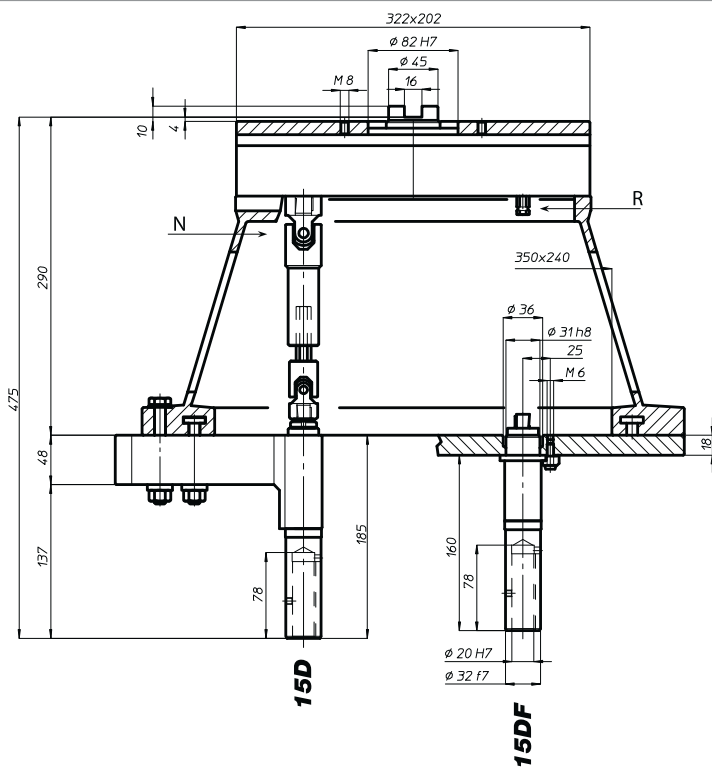
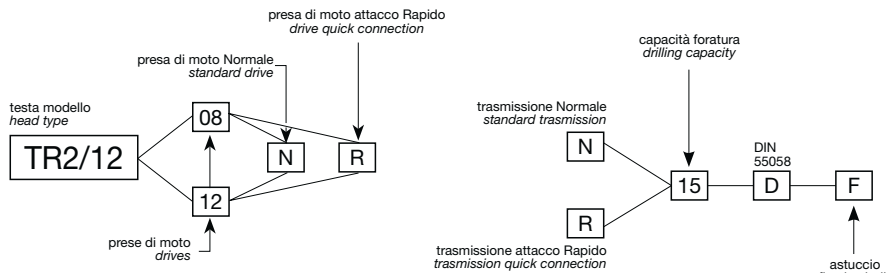
Appendice tecnica  
Technical supplement



# TR2/12

Codice testa  
Head code

Codice mandrino  
Spindle code



N° prese di moto  
Nr. spindle drives

08-12



Rapporto  
Ratio

1-1



Capacità di foratura  
Drilling capacity  
acciaio R=500 N/mm<sup>2</sup>  
ghisa: GG25

13  
15



Maschiatura  
Tapping

M12



Attacco utensile  
Type of spindle

DIN 55058 Ø20



Peso gruppo testa  
Head weight

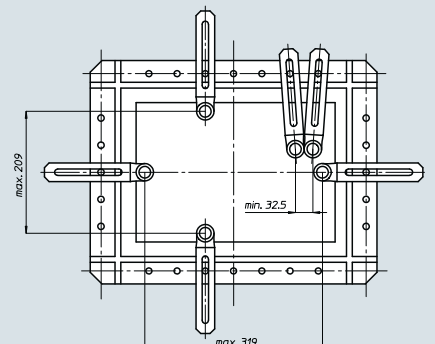
Kg 30



Peso gruppo mandrino  
Spindle-set weight

Kg 2,6

area di lavoro  
working area



BAH

TA.CP

TA

MO

HT

VH

TSI/TSX

T

MT-TC-TC3

Accessori  
Accessories

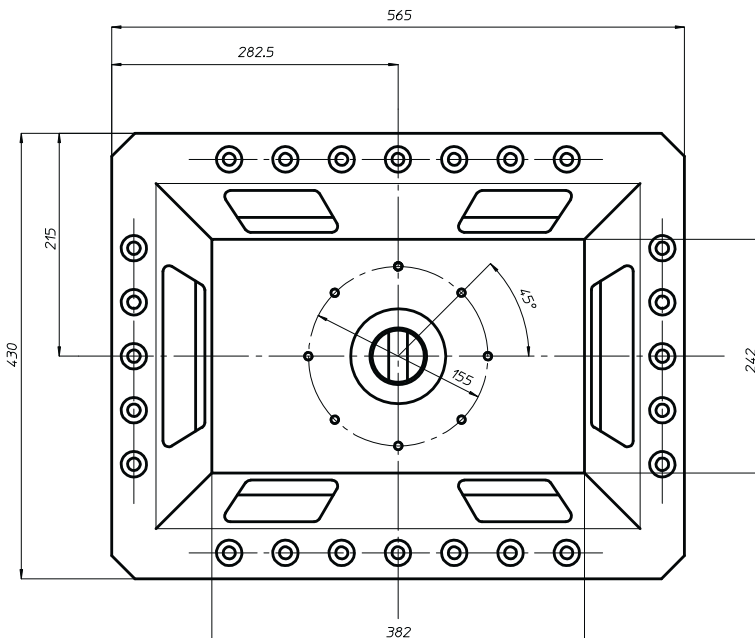
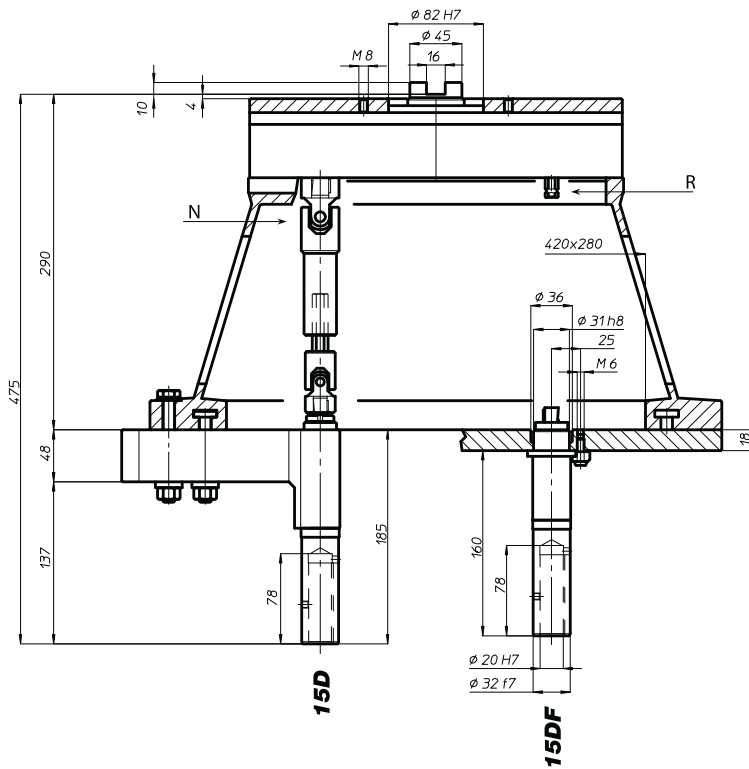
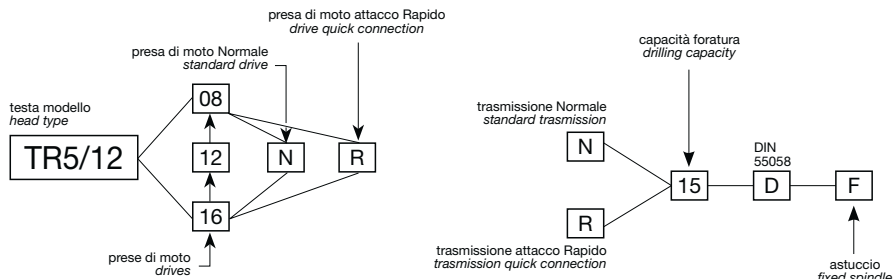
Appendice tecnica  
Technical supplement



# TR5/12

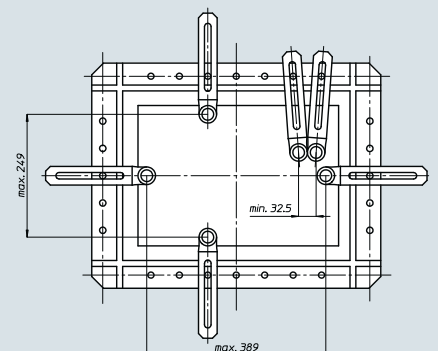
Codice testa  
Head code

Codice mandrino  
Spindle code



	N° prese di moto Nr. spindle drives	08-12-16
	Rapporto Ratio	1-1
	Capacità di foratura Drilling capacity acciaio R=500 N/mm <sup>2</sup> ghisa: GG25	13 15
	Maschiatura Tapping	M12
	Attacco utensile Type of spindle D	DIN 55058 Ø20
	Peso gruppo testa Head weight	Kg 34,5
	Peso gruppo mandrino Spindle-set weight	Kg 2,6

area di lavoro  
working area



BAH

TA.CP

TA

MO

HT

VH

TSI/TSX

T

MT-TC-TC3

Accessori  
Accessories

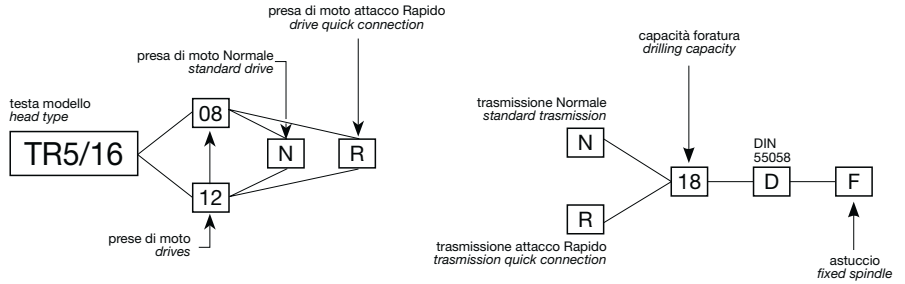
Appendice tecnica  
Technical supplement

# TR5/16



Codice testa  
Head code

Codice mandrino  
Spindle code



N° prese di moto  
Nr. spindle drives

08-12



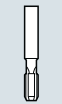
Rapporto  
Ratio

1-1



Capacità di foratura  
Drilling capacity  
acciaio R=500 N/mm<sup>2</sup>  
ghisa: GG25

16  
18



Maschiatura  
Tapping

M14



Attacco utensile  
Type of spindle

D DIN 55058 Ø25



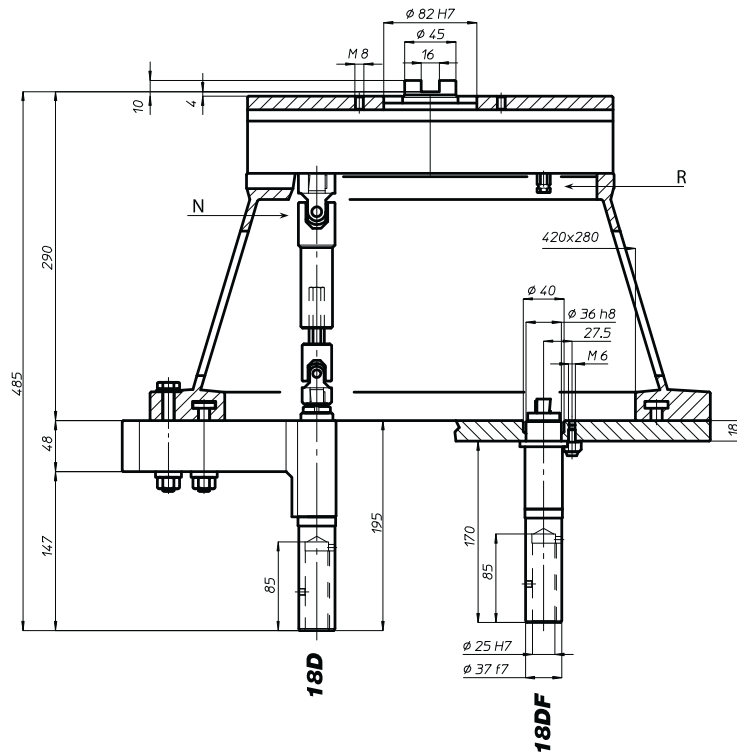
Peso gruppo testa  
Head weight

Kg 36

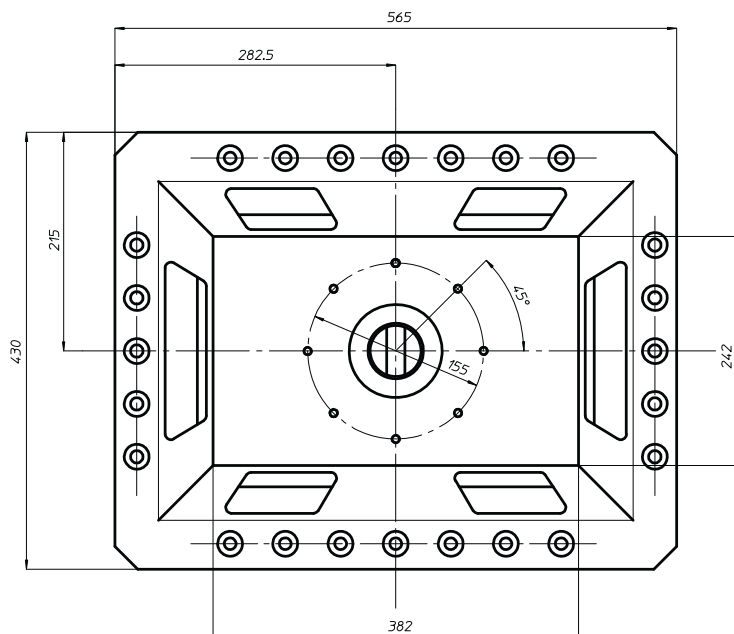
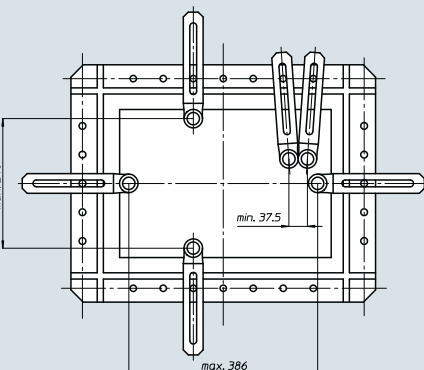


Peso gruppo mandrino  
Spindle-set weight

Kg 3,3



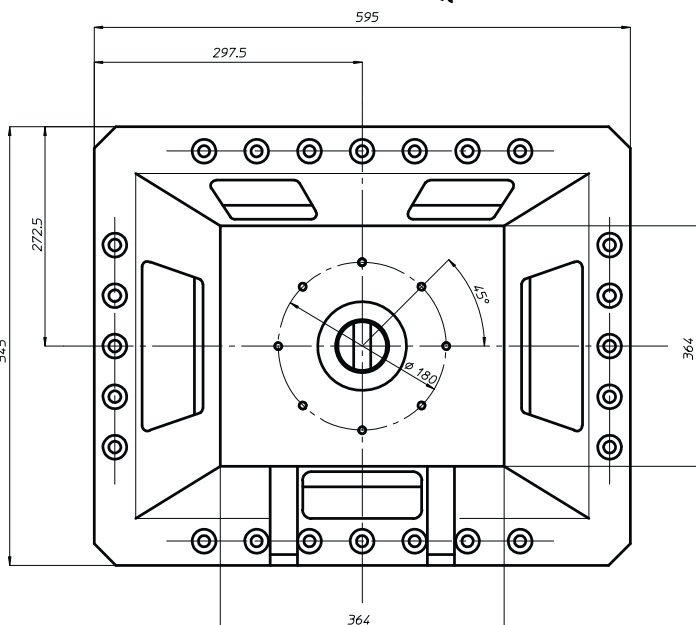
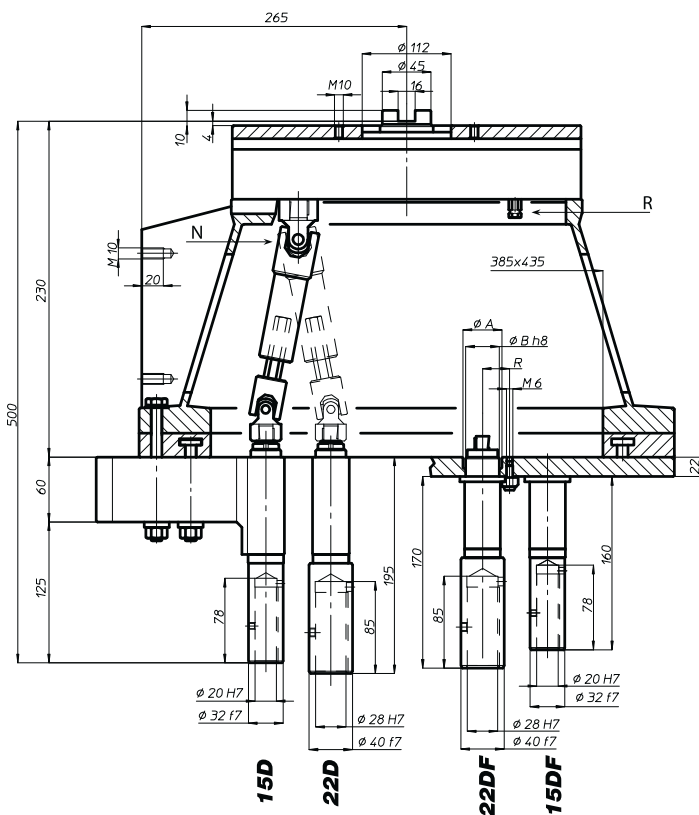
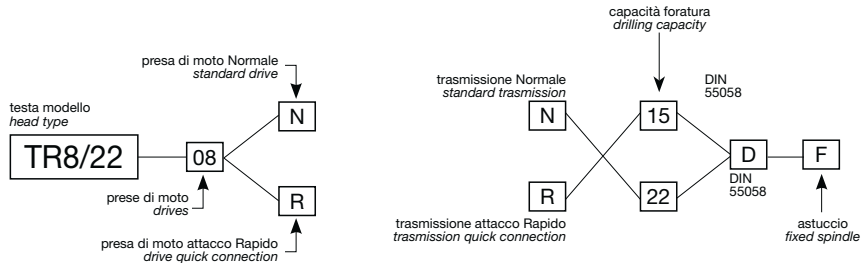
area di lavoro  
working area



# TR8/22

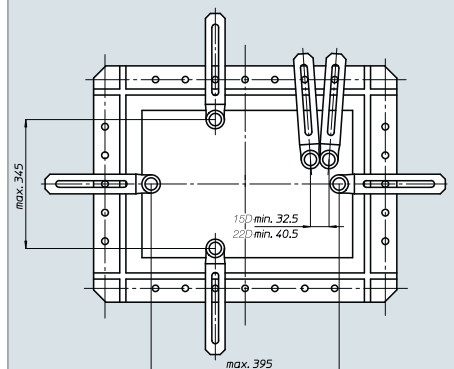
Codice testa  
Head code

Codice mandrino  
Spindle code



	N° prese di moto Nr. spindle drives	12
	Rapporto Ratio	1-1,5
	Capacità di foratura Drilling capacity acciaio R=500 N/mm <sup>2</sup> ghisa: GG25	15D: 13 22D: 20 15D: 15 22D: 22
	Maschiatura Tapping	15D: M12 22D: M16
	Attacco utensile Type of spindle D	DIN 55058 $\phi 20$ - $\phi 28$
	Peso gruppo testa Head weight	Kg 86
	Peso gruppo mandrino Spindle-set weight	15D: Kg 4 22D: Kg 5,5

area di lavoro  
working area



BAH

TA.CP

TA

MO

HT

VH

TSI/TSX

T

MT-TC-TC3

Accessori  
Accessories

Appendice tecnica  
Technical supplement

# TM400



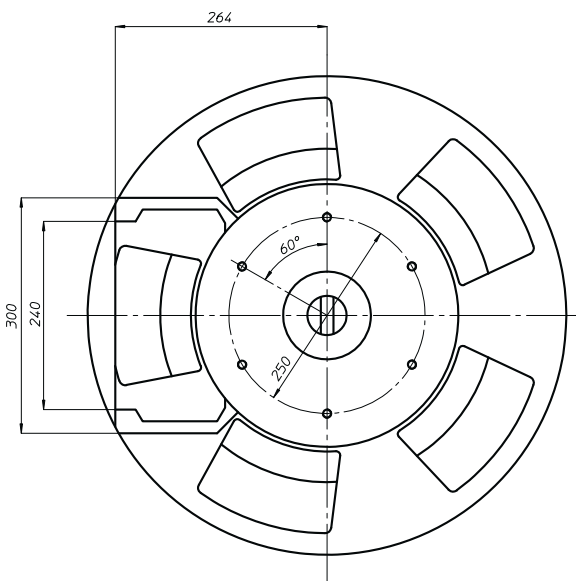
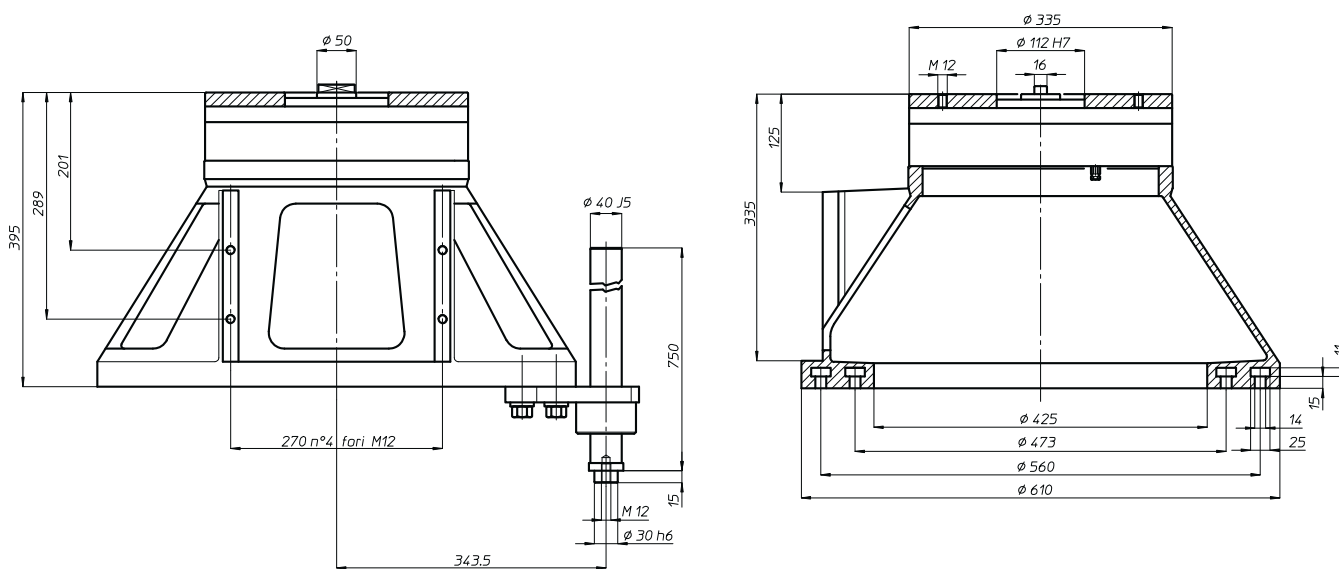
Codice testa  
Head code

testa modello  
head type

TM400 12 R

prese di moto  
drives

presa di moto attacco Rapido  
drive quick connection



N° prese di moto  
Nr. spindle drives

12



Rapporto  
Ratio

1-1



Peso  
Weight

Kg 105

area di lavoro  
working area

Ø 385



# TM500



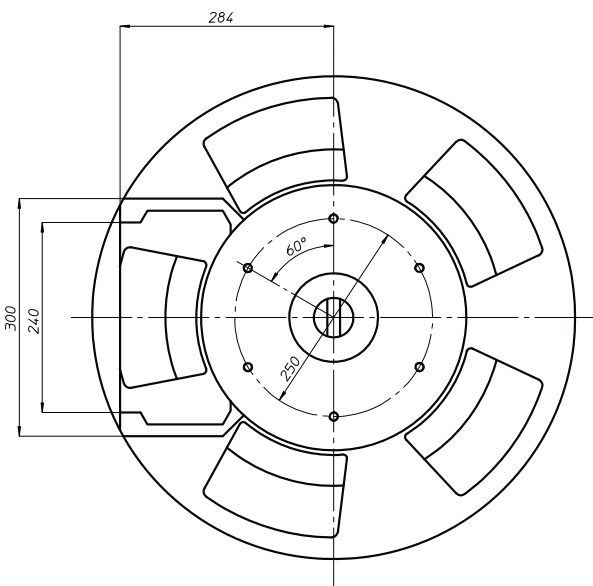
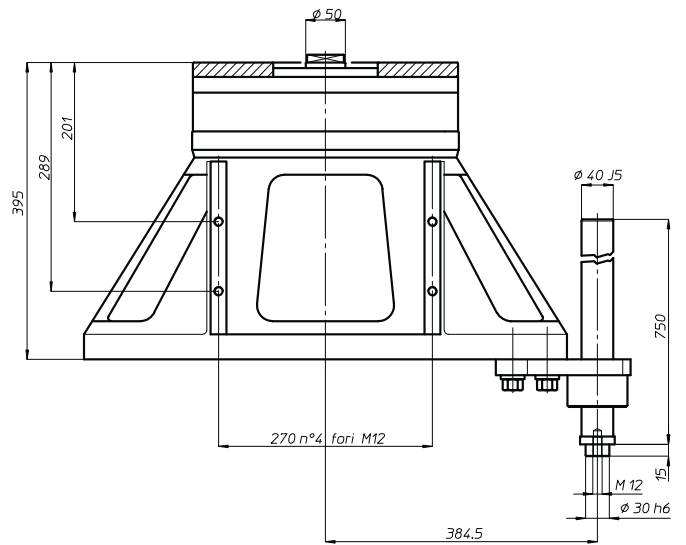
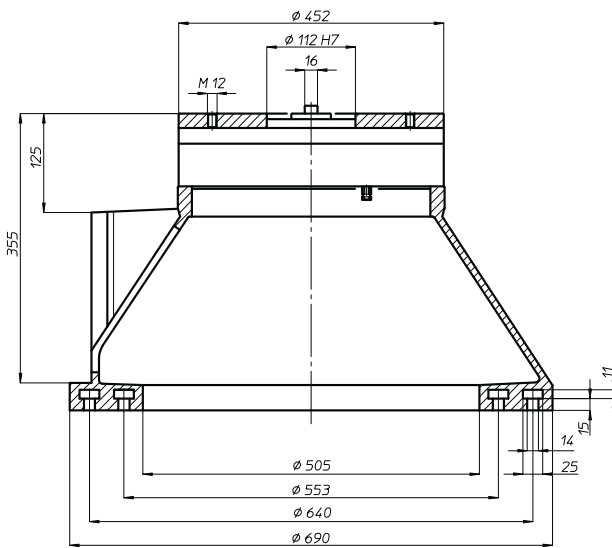
Codice testa  
Head code

testa modello  
head type



prese di moto  
drives

presa di moto attacco Rapido  
drive quick connection



	N° prese di moto Nr. spindle drives	<b>18</b>
	Rapporto Ratio	<b>1-1</b>
	Peso Weight	<b>Kg 145</b>

area di lavoro  
working area

$\phi 465$

BAH

TA.CP

TA

MO

HT

VH

TSI/TSX

**T**

MT-TC-TC3

Accessori  
Accessories

Appendice tecnica  
Technical supplement



# TRM43



Codice testa  
Head code

testa modello  
head type

TRM43 - 16 - R

prese di moto  
drives

presa di moto attacco Rapido  
drive quick connection



N° prese di moto  
Nr. spindle drives

16



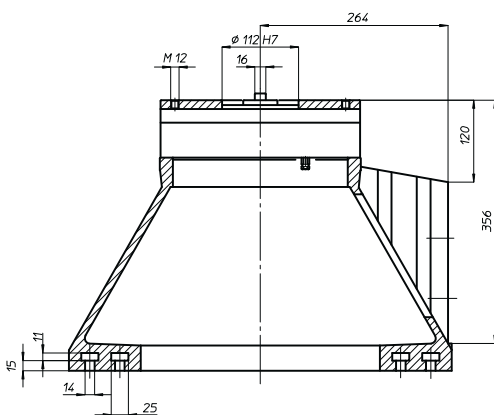
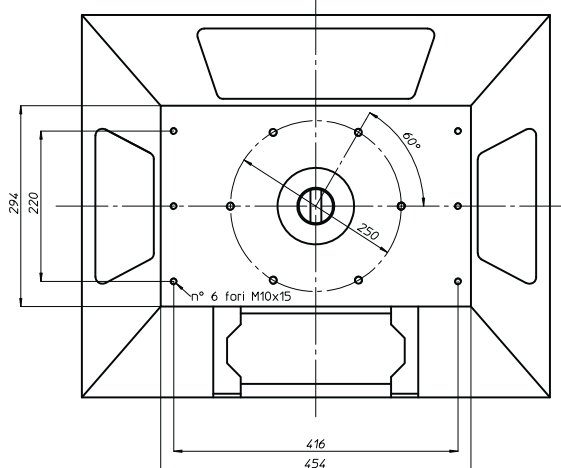
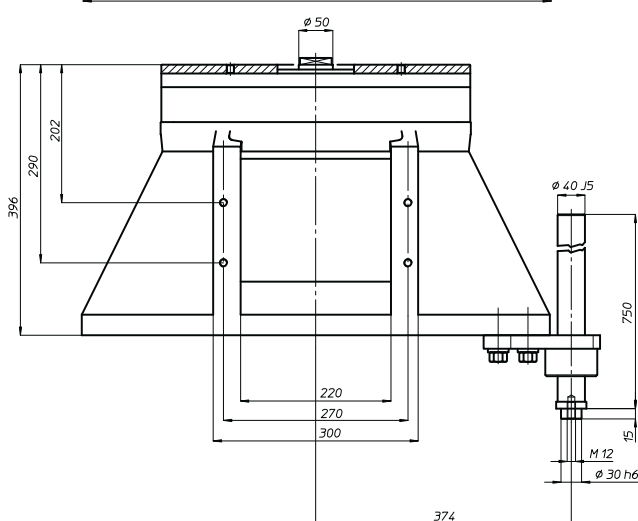
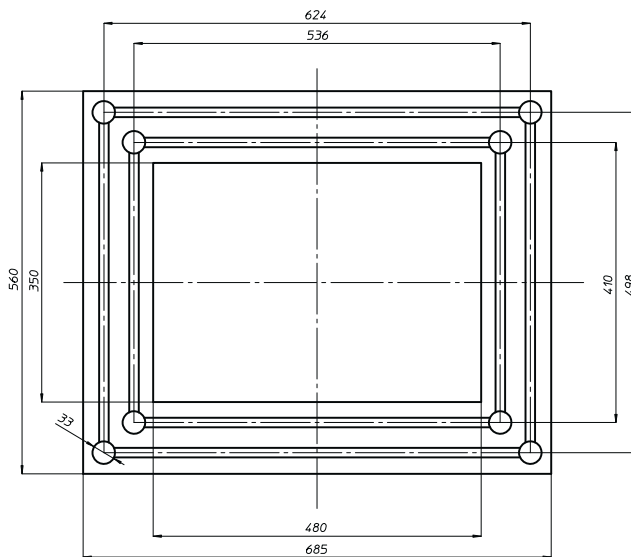
Rapporto  
Ratio

1-1



Peso  
Weight

Kg 135



area di lavoro  
working area

300 x 440

BAH

TA-CP

TA

MO

HT

VH

TSI/TSX

T

MT-TC-TC3

Accessori  
Accessories

Appendice tecnica  
Technical supplement



# TRM73

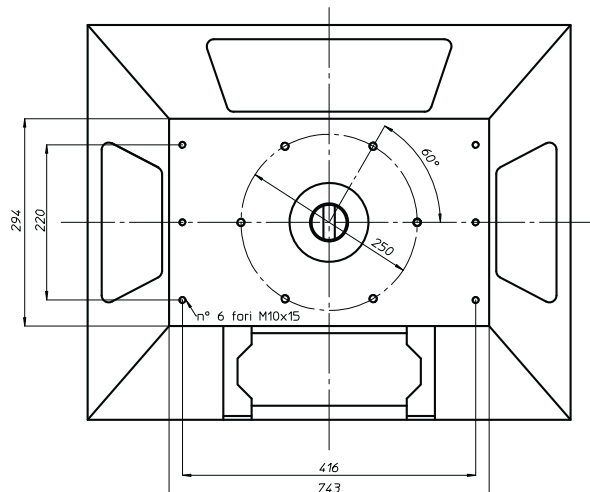
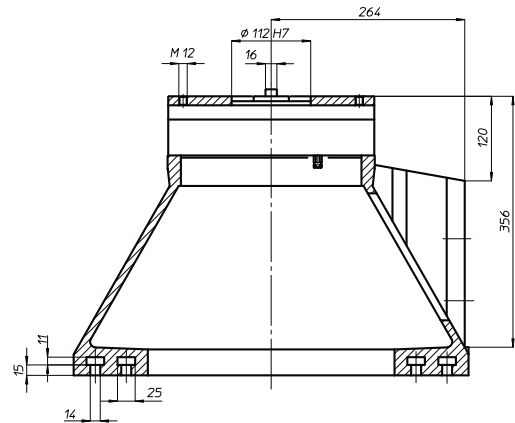
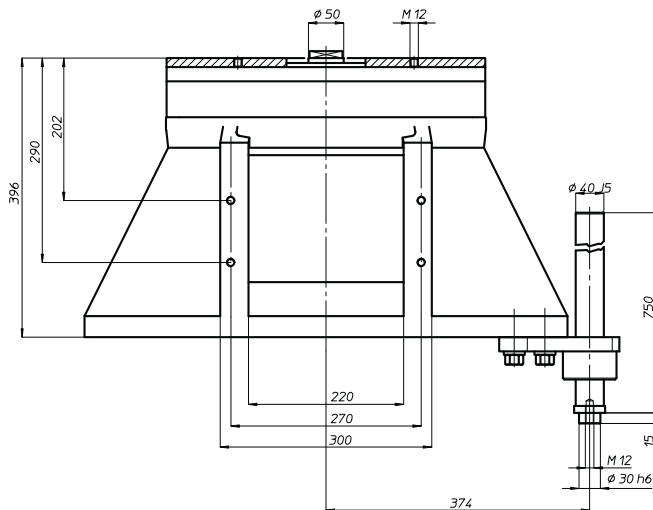
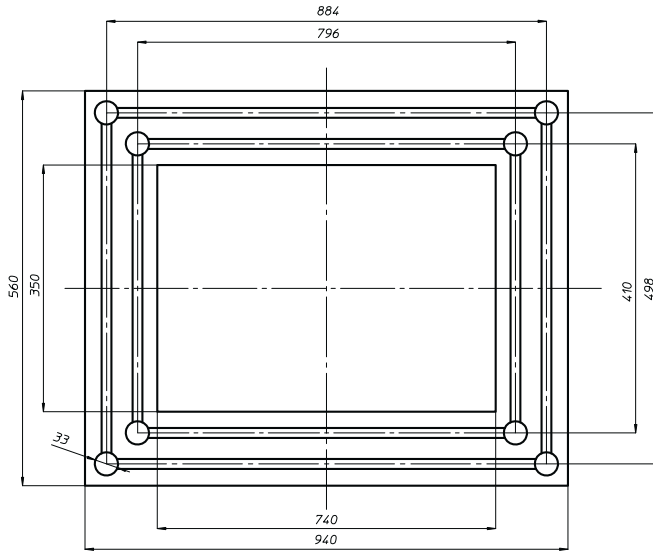
Codice testa  
Head code

testa modello  
head type



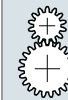
prese di moto  
drives

presa di moto attacco Rapido  
drive quick connection



N° prese di moto  
Nr. spindle drives

26



Rapporto  
Ratio

1-1



Peso  
Weight

Kg 210

area di lavoro  
working area

300 x 700

BAH

TA.CP

TA

MO

HT

VH

TSI/TSX

T

MT-TC-TC3

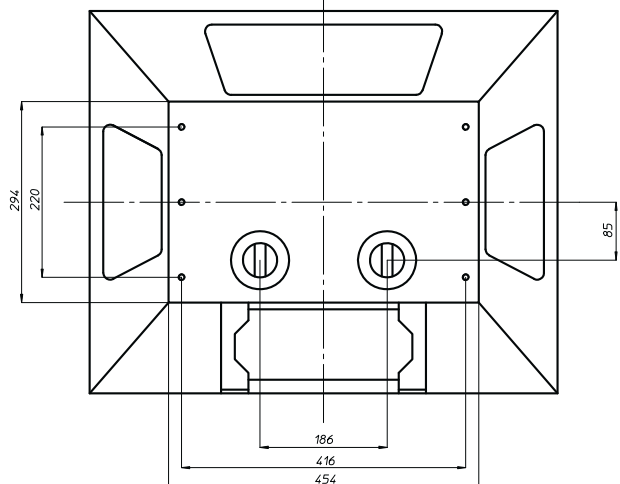
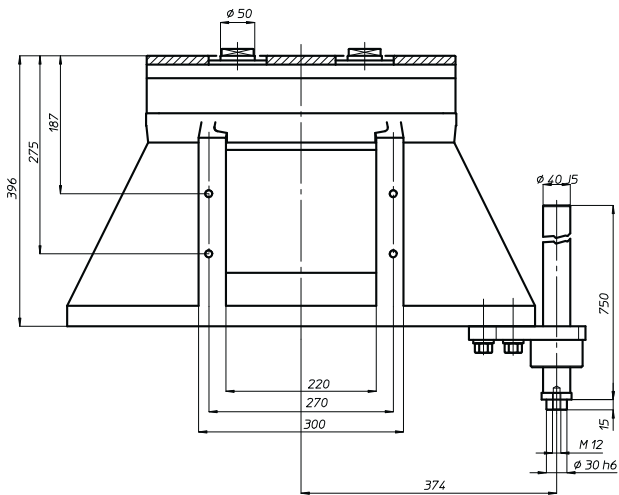
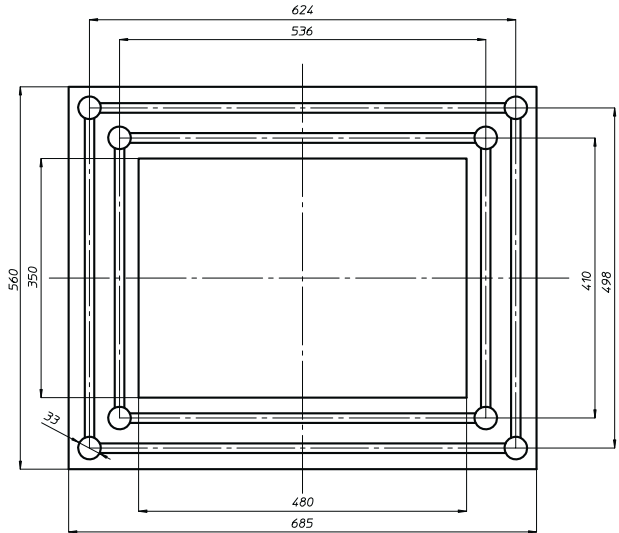
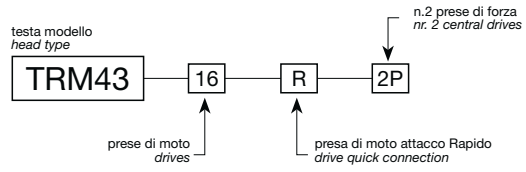
Accessori  
Accessories

Appendice tecnica  
Technical supplement

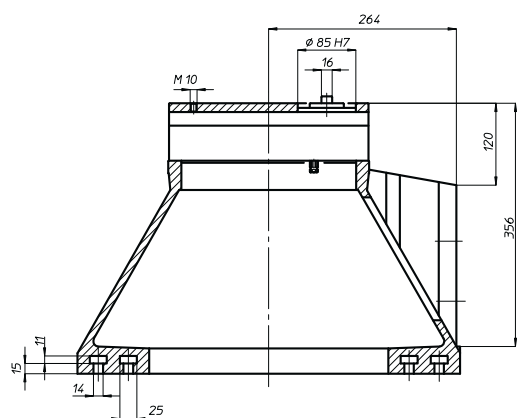
# TRM43-2P



Codice testa  
Head code



	N° prese di moto Nr. spindle drives	<b>8+8</b>
	Rapporto Ratio	<b>1-1</b>
	Peso Weight	<b>Kg 140</b>

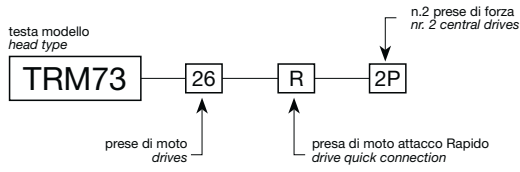


area di lavoro  
working area  
**300 x 440**

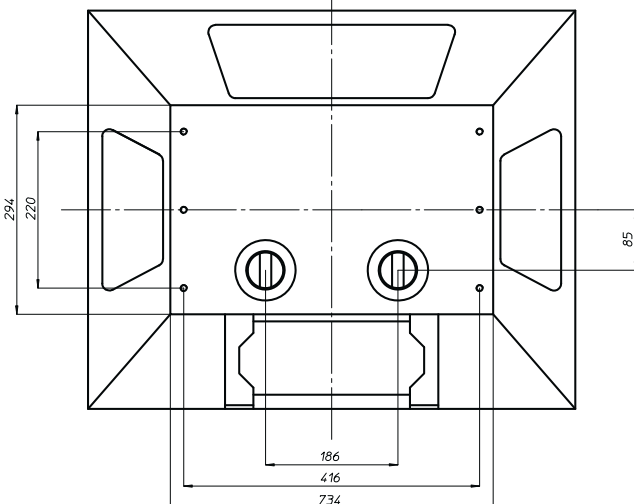
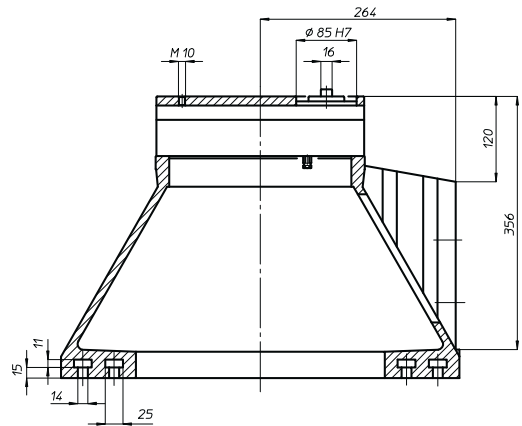
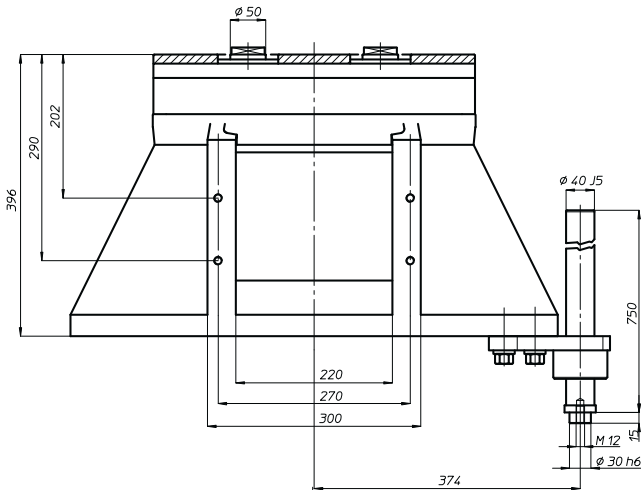
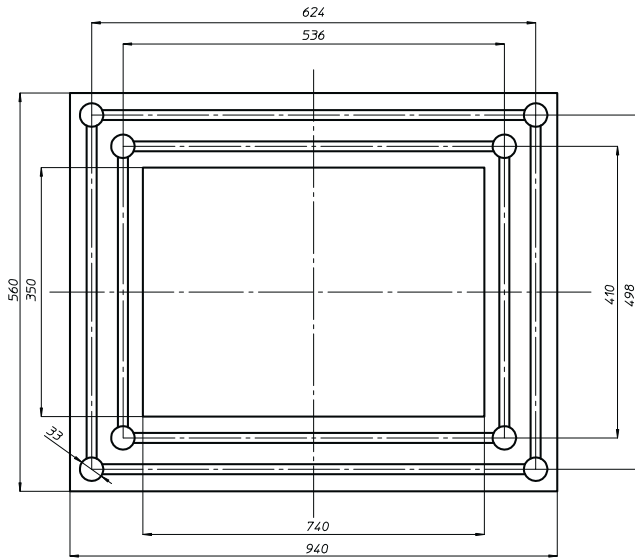
BAH  
TA-CP  
TA  
MO  
HT  
VH  
TSI/TSX  
T  
MT-TC-TC3  
Accessori  
Accessories  
Appendice tecnica  
Technical supplement  
8-28



# TRM73-2P

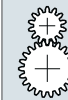


Codice testa  
Head code



N° prese di moto  
Nr. spindle drives

13+13



Rapporto  
Ratio

1-1



Peso  
Weight

Kg 210

area di lavoro  
working area

300 x 700

BAH

TA.CP

TA

MO

HT

VH

TSI/TSX

T

MT-TC-TC3

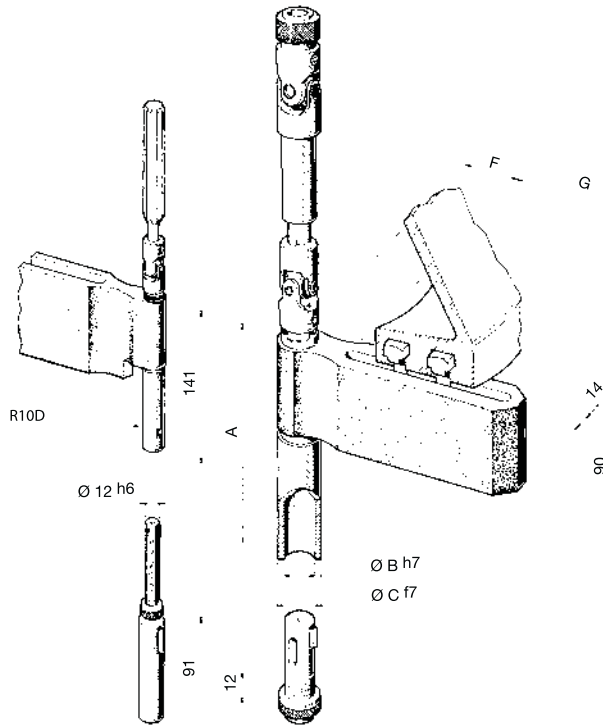
Accessori  
Accessories

Appendice tecnica  
Technical supplement



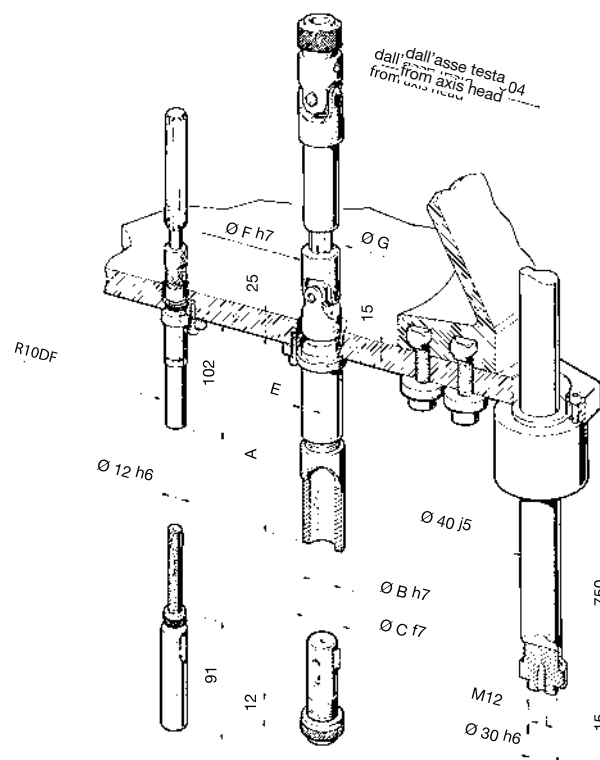
# solo per teste TM-TRM for TM-TRM heads only

## su staffa - *on arm*



Tipi mandrini spindles type	10D	12D	15D	18D	22D	25D
Codice code	R10D-S5 R10D-S6	R12D-S5 R12D-S6	R15D-S5 R15D-S6	R18D-S5 R18D-S6	R22D-S5 R22D-S6	R25D-S5 R25D-S6
Capacità foratura drilling capacity	8	10	13	16	20	22
acciaio R=500 N/mm ghisa: GG25	10	12	15	18	22	25
Capacità maschiatura tapping	M6	M8	M12	M14	M16	M18
A	127	181	185	194	195	232
ØB h7	12	16	20	25	28	32
ØC f7	20	25	32	37	40	45
F	59	55	55	55	55	60
G	200 270	200 270	200 270	200 270	200 270	200 270
Interasse minimo center distance	23	28	32,5	37,5	40,5	50
Peso weight	kg 4,0 4,5	4,7 5,2	5,2 5,7	5,5 6,3	6,6 7,4	8,6 9,5

## su astuccio per flangia fissa - *fixed plate spindle*

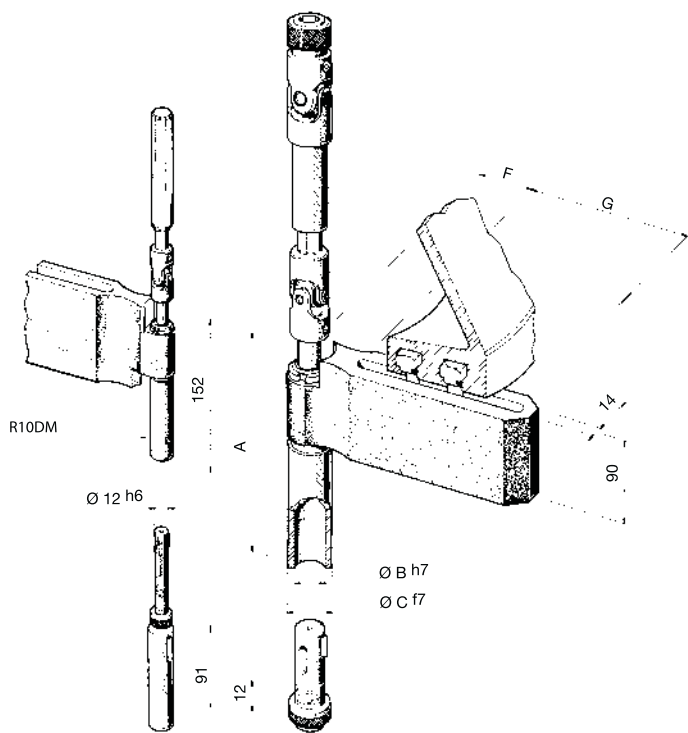


Tipi mandrini spindles type	10D	12D	15D	18D	22D	25D
Codice code	R10DF	R12DF	R15DF	R18DF	R22DF	R25DF
Capacità foratura drilling capacity	8	10	13	16	20	22
acciaio R=500 N/mm ghisa: GG25	10	12	15	18	22	25
Capacità maschiatura tapping	M6	M8	M12	M14	M16	M18
A	102	156	160	169	170	207
ØB h7	12	16	20	25	28	32
ØC f7	20	25	32	37	40	45
E Interasse vite M6 distance screw M6	18,5	23	25	27,5	29	34
ØF h7	23	27,5	31	36	39	50
ØG	27	32	36	40	44	56
Interasse minimo center distance	23,5	28	32,5	37,5	40,5	50,5
Peso weight	kg 2,0	2,3	2,6	3,4	3,8	5,2



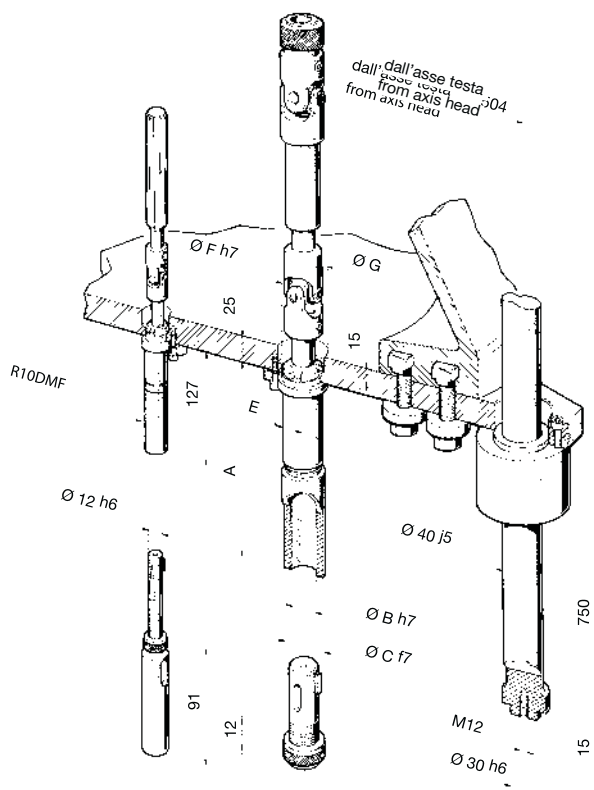
# solo per teste TM-TRM for TM-TRM heads only

## su staffa - on arm



Tipi mandrini spindles type	10DM	15DM	22DM
Codice code	R10DM-S5 R10DM-S6	R15DM-S5 R15DM-S6	R22DM-S5 R22DM-S6
Capacità maschiatura tapping	M6	M12	M16
Corsa maschiatura Tapping stroke	40	40	40
A	152	208	217
ØB h7	12	20	28
ØC f7	20	32	40
F	59	55	55
G	200 270	200 270	200 270
Interasse minimo center distance	23	32,5	40,5
Peso weight	kg 4,0 4,5	5,2 5,7	6,6 7,4

## su astuccio per flangia fissa - fixed plate spindle

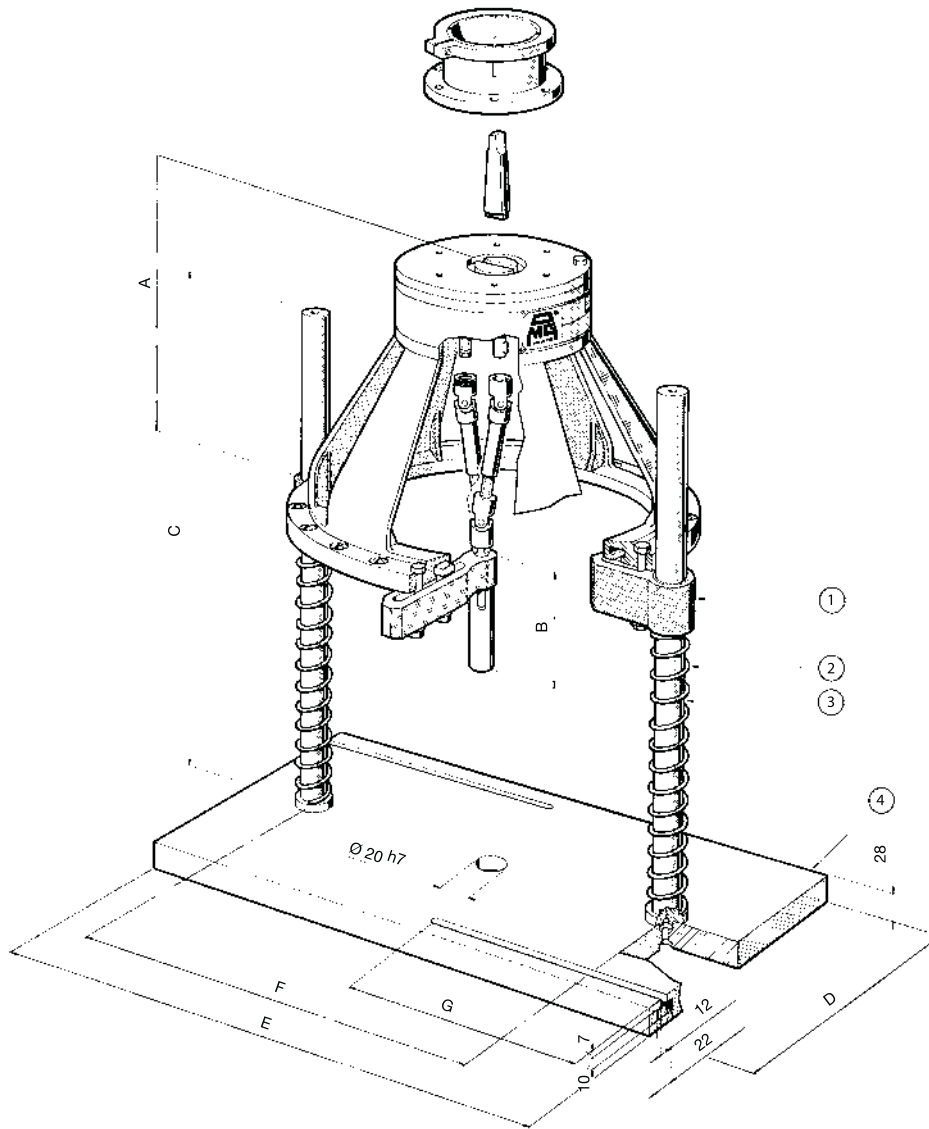


Tipi mandrini spindles type	10DM	15DM	22DM
Codice code	R10DMF	R15DMF	R22DMF
Capacità maschiatura tapping	M6	M12	M16
Corsa maschiatura Tapping stroke	40	40	40
A	127	183	192
ØB h7	12	20	28
ØC f7	20	32	40
E Interasse vite M6 distance crew M6	18,5	25	29
ØF f7	23	31	39
ØG	27	36	44
Interasse minimo center distance	23,5	32,5	40,5
Peso weight	kg 2,0	2,6	3,8



# attrezzature per teste multiple multispindle heads equipment

## serie T - TS - TL - TR



Modello testa head type	A	B		C	D	E	F	G	1 supporto di guida guide bush	2 molla spring	3 colonna column	4 base base			
		DIN 55058	Pinza ER												
T4	205	91,5	76	500	250	500	280	300	076123	076126	076120	076081			
T7	205	101,5	76				350					076082			
T10	236	109	94,5				404					076083			
T12	260	172					454					076084			
TS12	283	172		650	300	650	542	076133	076136	076130	076088				
T15	272	175					492				076085				
TS15	282	175					552				076089				
T18	293	185					540				076086				
TS18	299	85		650	300	650	582	076133	076136	076130	076090				
T22	317	185					540				076087				
TS22	317	185					582				076091				
TL20/4	237	91,5	76				500				250	500	400	076123	076126
TL20/6	237	101,5	76	604	076133	076136		076130	076093						
TL20/8	237	109	94,5	850						076133			076136		
TL40/12	290	175		650	300	850	804	450	076095						
TL40/16	290	185									650	300		850	804
TL40/22	318	185		650	300	850	804	450	076095						
TL60/12	290	175								650	300	850	804	450	076095
TL60/16	290	185		650	300	850	804	450	076095						
TL60/22	318	185								650	300	850	804	450	076095
TR2/12	290	175		650	300	850	804	450	076095						
TR2/16	290	185								650	300	850	804	450	076095
TR5/12	290	175		650	300	850	804	450	076095						
TR5/16	290	185								650	300	850	804	450	076095



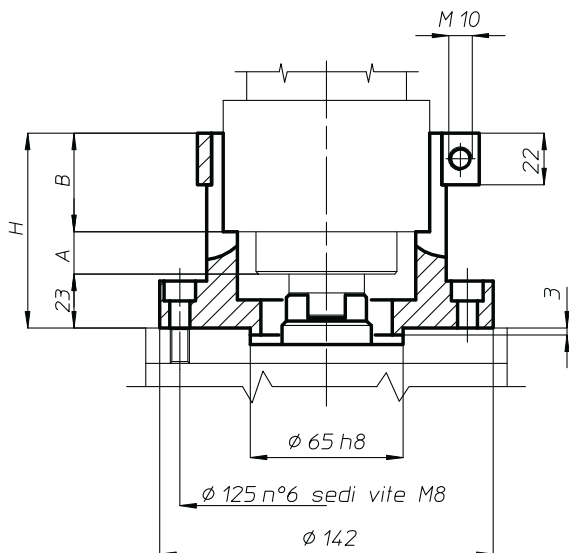


# Attacco Cono Morse trascinatorio

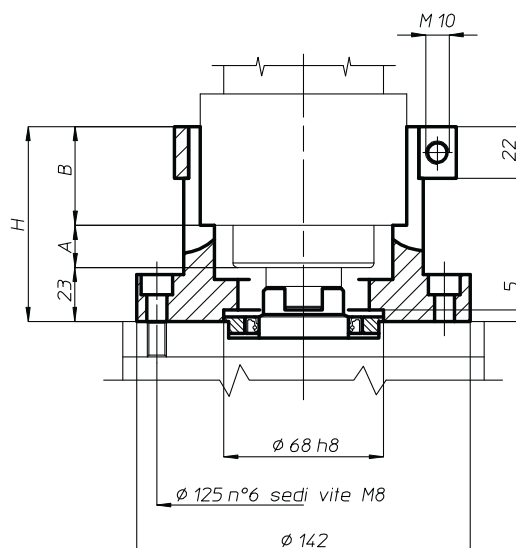
## Morse Taper with driving dog

**T4 - T7 - T10 - TL20...**

**Versione standard**  
*Standard version*

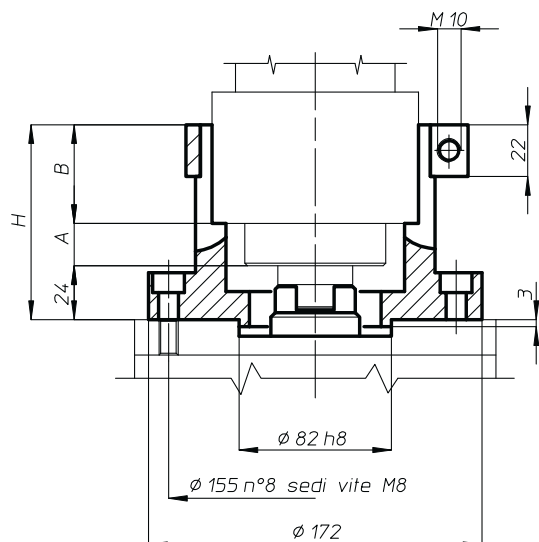


**Solo versione orizzontale**  
*For horizontal use only*



**T12 - T15 - T18 - T22 - TL40... - TL60... - TR2... - TR5...**

**Versione standard**  
*Standard version*



**Solo versione orizzontale**  
*For horizontal use only*

